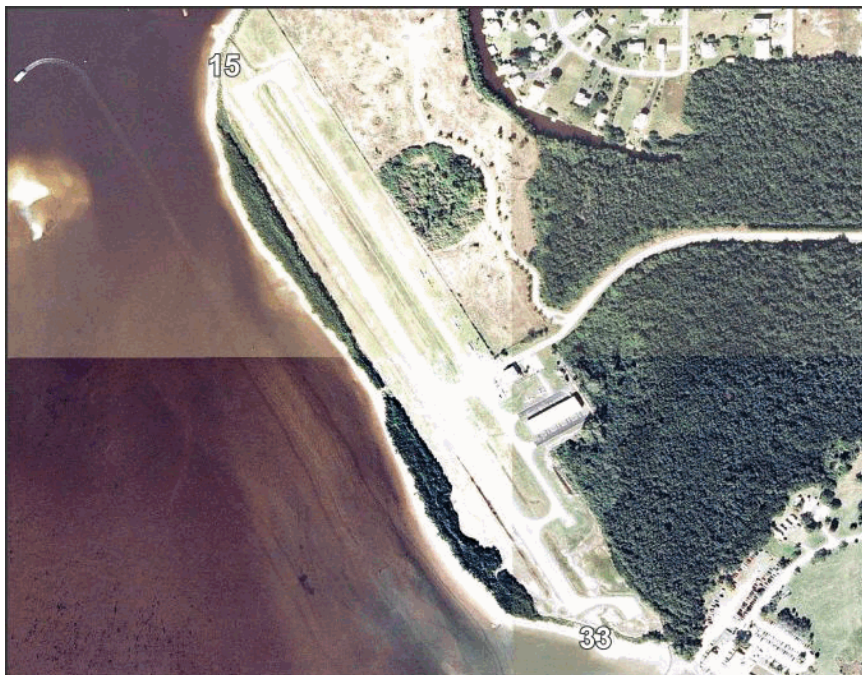


**Everglades City / Collier  
Everglades Airpark**

**Owner** Collier County Airport Authority  
**Manager** Spencer Brillon  
**Address** 165 Airpark Blvd  
 Immokalee, FL 34142

**Phone** 239-252-8393 **Fax**  
**E-Mail** [spencer.brillon@colliercountyfl.gov](mailto:spencer.brillon@colliercountyfl.gov)  
**Website** <https://www.colliercountyfl.gov/government/transportation-management-services/airport-authority/everglades-airpark>

**Identifier** X01  
**Latitude** 25-50.932 N  
**Longitude** 81-23.417 W  
**Elevation** 5 ft  
**From City** 1 Miles SW  
**Sectional** Miami  
**Hi Chart**  
**Lo Chart**



Runway	Surface	Length	Width	Lighting		VGSI	
				Runway	Approach		
15/33	Asph	2,400ft	60ft	MIRL		N/N	
Airport Remarks	See Airport Facility Directory remarks and current NOTAMS. Right traffic Rwy 15. High density bird population on & around airport. Personnel & equipment working in vicinity of RWY. Insufficient safety areas beyond the end of each runway. Clearance delivery w/ Miami (305) 716-1731.						
ATIS	CTAF	UNICOM	GND CON	TOWER	APP CON	CLNC DEL	DEP CON
123.075		123.075					
WEATHER 1-800-WX-BRIEF		ASOS / AWOS			Services		
Fixed Base Operator		Telephone		Airframe	NO	Telephone	YES
				Electronics	NO	Lodging	NO
				Powerplant	NO	Dining	YES
				Rental Car	NO	Taxi	NO
				FUEL	100LL		
Everglades Airpark		239-252-6298		ATTENDED (Month/Day/Hr)	ALL/MON-SAT/0800-1600		