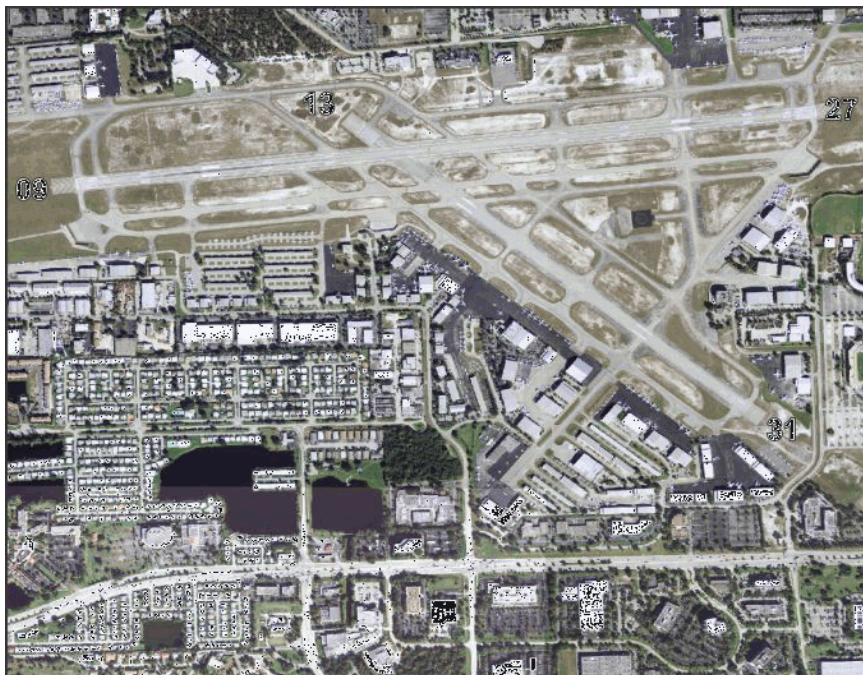


## Fort Lauderdale / Broward Fort Lauderdale Executive Airport

**Owner** City of Fort Lauderdale  
**Manager** Rufus A James  
**Address** 6000 NW 21st Av  
Fort Lauderdale, FL 33309

**Identifier** FXE  
**Latitude** 26-11.837 N  
**Longitude** 80-10.242 W  
**Elevation** 13.4 ft  
**From City** 5 Miles N  
**Sectional** Miami  
**Hi Chart** H-81  
**Lo Chart** L-23C, A

**Phone** 561-302-9121      **Fax** 954-938-4974  
**E-Mail** rjames@fortlauderdale.gov  
**Website** https://www.flyfxe.com



Runway	Surface	Length	Width	Lighting		VGSI
				Runway	Approach	
09/27	Asph	6,002ft	100ft	HIRL	MALSR / REIL	P4L/P4L
13/31	Asph	4,000ft	100ft	MIRL	REIL / REIL	P2L/P2L

**Airport Remarks** See Airport Facility Directory remarks and current NOTAMS. Birds on & in vicinity of airport. All aircraft avoid overflights of residential area 1/2 mile SW of control tower. Noise abatement procedures. Customs ramp CLSD 0000-0800. Use caution for drones authorized within the Class D. Rwy 13/31 closed 2200-0700 when Rwy 9/27 operational full length.

ATIS	CTAF	UNICOM	GND CON	TOWER	APP CON	CLNC DEL	DEP CON
119.850		122.950	121.750	120.900	119.700	127.950	119.700

WEATHER 1-800-WX-BRIEF	ASOS / AWOS		Services				
	119.850	954-772-2537	Airframe	YES	Telephone	YES	
Fixed Base Operator			Telephone	Electronics	YES	Lodging	YES
Banyan Air Service Fort Lauderdale Executive Jet Center W Aviation Atlantic Aviation			954-491-3170	Powerplant	YES	Dining	YES
			954-351-2003	Rental Car	YES	Taxi	YES
			954-915-7024	FUEL	100LL, Jet A, Jet B		
			954-772-7444	ATTENDED (Month/Day/Hr)	ALL/ALL/ALL		