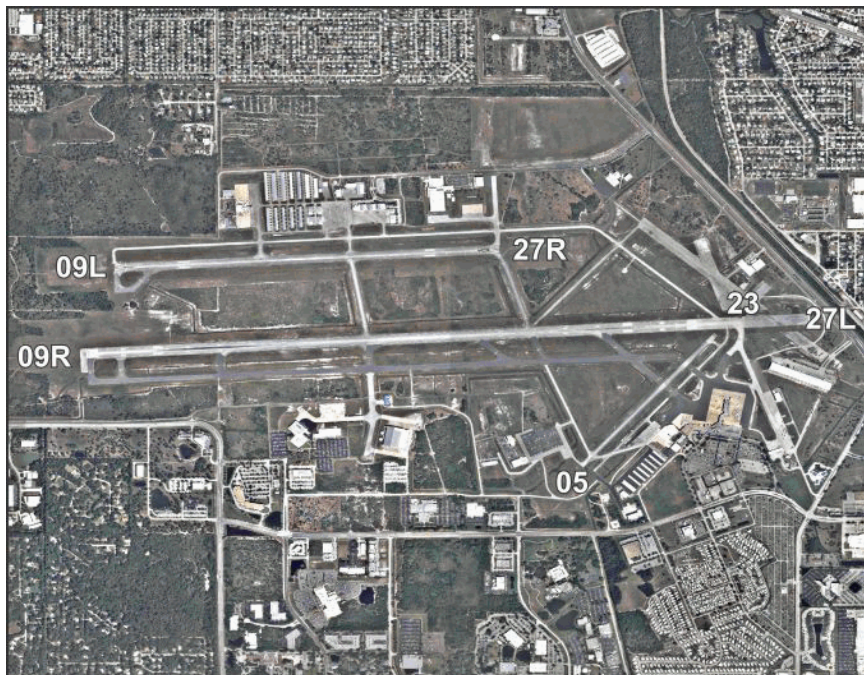


## Melbourne / Brevard Melbourne Orlando International Airport

**Owner** Melbourne Airport Authority  
**Manager** Greg Donovan AAE  
**Address** 1 Air Terminal Pkwy, Ste 220  
 Melbourne, FL 32901

**Identifier** MLB  
**Latitude** 28-06.165 N  
**Longitude** 80-38.715 W  
**Elevation** 33 ft  
**From City** 2 Miles NW  
**Sectional** Jacksonville  
**Hi Chart** H-81  
**Lo Chart** L-24F

**Phone** 321-723-6227 x123      **Fax** 321-723-1194  
**E-Mail** gdonovan@mlbair.com  
**Website** https://www.mlbair.com/



Runway	Surface	Length	Width	Lighting		VGSI
				Runway	Approach	
05/23	Asph	3,001ft	75ft	MIRL		P2L/P2L
09L/27R	Asph	6,000ft	150ft	MIRL		P4L/P4L
09R/27L	Asph	10,181ft	150ft	HIRL	MALSR / REIL	P4L/P4L

**Airport Remarks** See Airport Facility Directory remarks and current NOTAMS. Customs user fee airport. Touch & go ops restricted after 2100L or 2 hours after sunset, whichever is later. PPR for military air crews to use Northrop Grumman ramp.

ATIS	CTAF	UNICOM	GND CON	TOWER	APP CON	CLNC DEL	DEP CON
132.550	118.200	122.950	121.900	118.200 124.050	126.025	121.900 126.025	126.025

WEATHER 1-800-WX-BRIEF	ASOS / AWOS		Services			
	132.550	321-951-7575	Airframe	YES	Telephone	YES
<b>Fixed Base Operator</b> FIT Aviation, LLC Shellair Aviation MLB	<b>Telephone</b> 321-674-6501 321-956-8695		<b>Electronics</b>	YES	<b>Lodging</b>	YES
			<b>Powerplant</b>	YES	<b>Dining</b>	YES
			<b>Rental Car</b>	YES	<b>Taxi</b>	YES
			<b>FUEL</b>	100LL, Jet A		
			<b>ATTENDED</b> (Month/Day/Hr)	ALL/ALL/ALL		