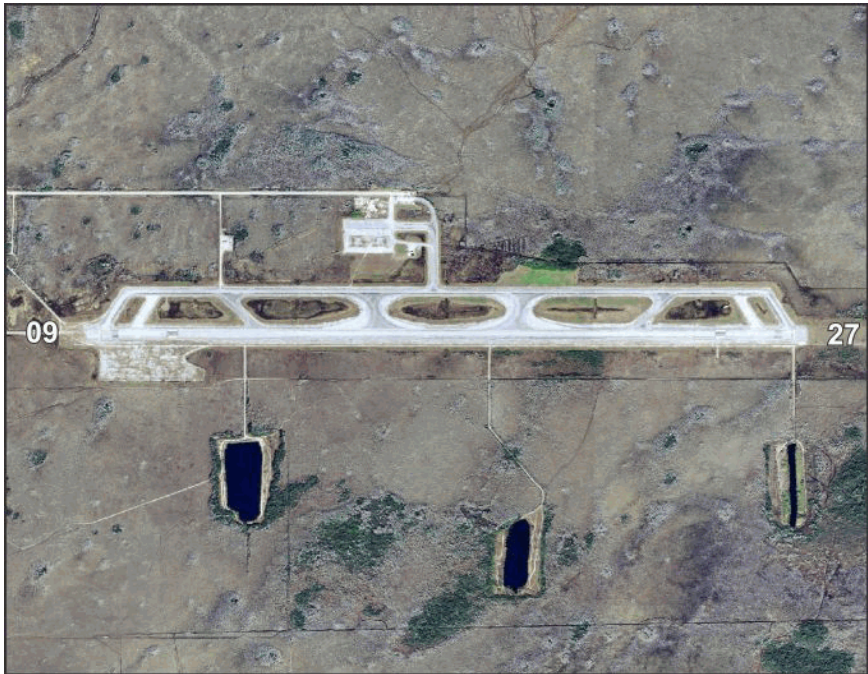


**Miami / Miami-Dade
Dade-Collier Training and Transition Airport**

Owner Miami-Dade County
Manager Joseph Kinnebrew C.M.
Address PO Box 025504
 Miami, FL 33102-5504

Identifier TNT
Latitude 25-51.708 N
Longitude 80-53.820 W
Elevation 13 ft
From City 36 Miles W
Sectional Miami
Hi Chart H-81
Lo Chart L-23C

Phone 305-876-7484 **Fax**
E-Mail jkinnebrew@flymia.com
Website https://www.miami-airport.com/dade_collier.asp



Runway	Surface	Length	Width	Lighting			VGSI
				Runway	Approach		
09/27	Asph	10,499ft	150ft	HIRL			N/N
Airport Remarks	See Airport Facility Directory remarks and current NOTAMS. Right traffic Rwy 27. Wildlife on & in vicinity of airport. Be alert to low flying National Park Service aircraft all quadrants. Airport closed to public except by PPR w/ Aviation Dept (305) 869-1660. PPR for nighttime ops. Clearance delivery available w/ Miami approach (305) 869-5432.						
ATIS	CTAF	UNICOM	GND CON	TOWER	APP CON	CLNC DEL	DEP CON
123.000		123.000		128.600			128.600
WEATHER 1-800-WX-BRIEF		ASOS / AWOS 119.075239-695-9198				Services	
Fixed Base OperatorTelephone				Airframe	NO	Telephone	YES
				Electronics	NO	Lodging	NO
				Powerplant	NO	Dining	NO
				Rental Car	NO	Taxi	NO
				FUEL			
				ATTENDED (Month/Day/Hr)	ALL/WED-SAT/0800-1800		