

The following graphic is an example of how activity at Florida airports generates economic impacts throughout the state.

ACME AIR IS PAID \$1 MILLION TO REPAIR AIRCRAFT

THE MONEY



HOW THE MONEY IS CIRCULATED

\$450,000
DIRECT PAYROLL

Acme Air uses \$450,000 of the \$1 million to pay their workers, including wages and benefits.

\$150,000
TAXES

Acme Air pays \$150,000 of the \$1 million to local, state, and federal taxes.

\$210,000
SUPPLIER PURCHASES

Acme Air pays \$210,000 of the \$1 million to Florida businesses that support their operations, such as machine shops and computer stores.

\$100,000
INDIRECT PAYROLL

\$100,000 of the \$210,000 is paid to workers as wages and benefits.

\$80,000
GOODS/SERVICES

\$80,000 of the \$210,000 is spent on goods and services.

\$30,000
BUSINESS TAXES

\$30,000 of the \$210,000 is paid to business taxes.

\$190,000
LEAKAGE

Acme Air pays \$190,000 of the \$1 million to businesses located outside Florida. This money is expelled from the state economy.

\$110,000
TAXES & SAVINGS

Employees from Acme Air and other in-state businesses use \$110,000 of their earnings on taxes and personal savings.

\$330,000
IN STATE PURCHASES

Employees from Acme Air and other in-state businesses spend \$330,000 of their wages on goods and services at Florida businesses.

\$80,000
INDUCED PAYROLL

Florida businesses pay \$80,000 of the \$330,000 to their workers as wages and benefits.

\$200,000
GOODS/SERVICES

Florida businesses spend \$200,000 of the \$330,000 on goods and services.

\$50,000
BUSINESS TAXES

Florida businesses pay \$50,000 of the \$330,000 to business taxes.

\$110,000
LEAKAGE

\$110,000 is lost to Florida's economy through out of state purchases.

DIRECT PAYROLL & TAXES

\$450,000 **\$150,000**
DIRECT PAYROLL BUSINESS TAXES

SUPPLIER PURCHASES

\$100,000 **\$30,000**
INDIRECT PAYROLL BUSINESS TAXES

INCOME RE-SPENDING

\$80,000 **\$50,000**
INDUCED PAYROLL BUSINESS TAXES

+ Value Added = \$860,000

THE ECONOMIC IMPACT OF

Palm Beach County Park Airport (LNA)



LNA

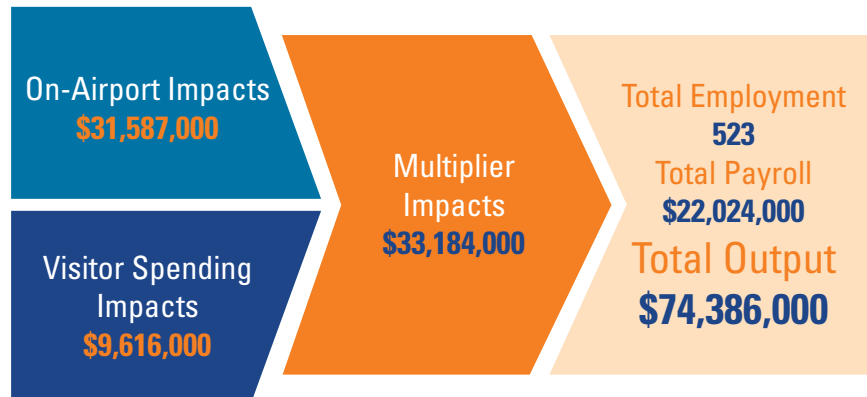


FDOT

PALM BEACH COUNTY PARK AIRPORT

Palm Beach County Park Airport is located approximately eight miles south of downtown West Palm Beach. The airport has three intersecting runways, with the longest runway measuring 3,489 feet. The airport accommodates general aviation aircraft and serves both local and transient users.

The airport primarily supports recreational flying, business activity, and flight training. The airport also supports agricultural spraying, cargo activity, aerial photography, and emergency medical aviation. Flight instructors use the airport to conduct flight trainings, and the airport provides aircraft maintenance and low priced fueling for users. The airport helps serve the region by offering support during natural disasters and transporting supplies and volunteers to impacted areas. The airport also assists in banner towing and flying blimps in the local region.



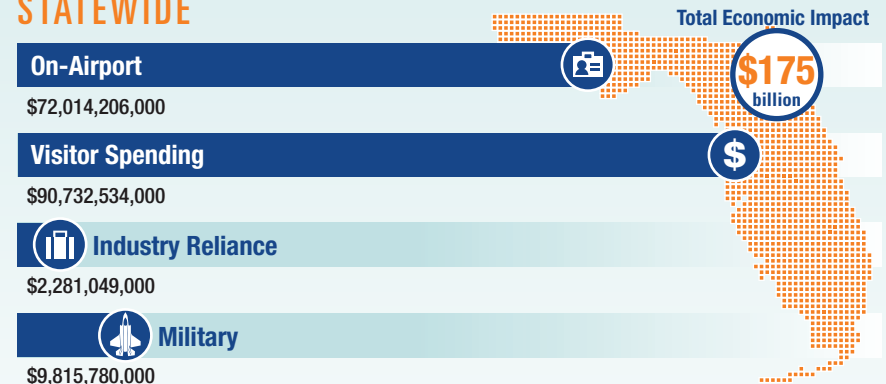
Previous versions of this Study used different terminology to communicate results. The following terms were updated: Direct Impacts changed to On-Airport Impacts and Indirect Impacts changed to Visitor Spending Impacts.

Florida's Statewide Benefits From Aviation

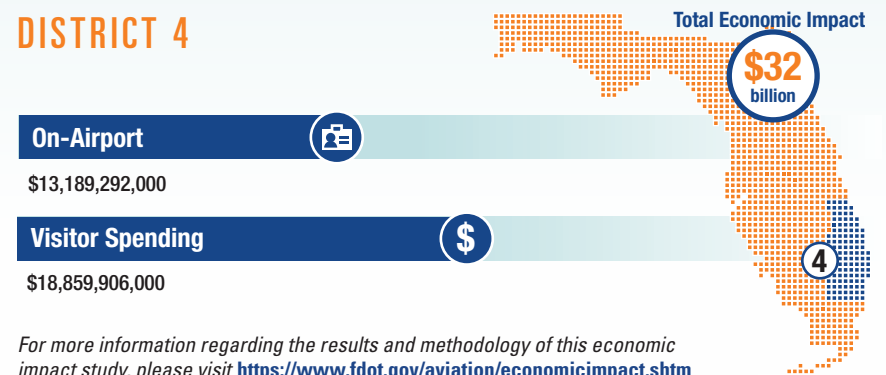
Florida realizes significant economic benefits from aviation. The Florida Department of Transportation completed a comprehensive economic impact analysis to measure these benefits. Benefits measured in the FDOT study considered on-airport impacts, visitor spending impacts, and multiplier impacts.

Florida's 129 public-use airports (including 20 commercial service facilities) are a major economic engine of the State's economy. The aviation system keeps Florida connected to the global marketplace while simultaneously driving local economies. Florida's airports provide space and infrastructure for important activities such as manufacturing, logistics, tourism, and emergency response. Below is a summary of the total statewide economic impact as well as the impact of District 4.

STATEWIDE



DISTRICT 4



For more information regarding the results and methodology of this economic impact study, please visit <https://www.fdot.gov/aviation/economicimpact.shtm>