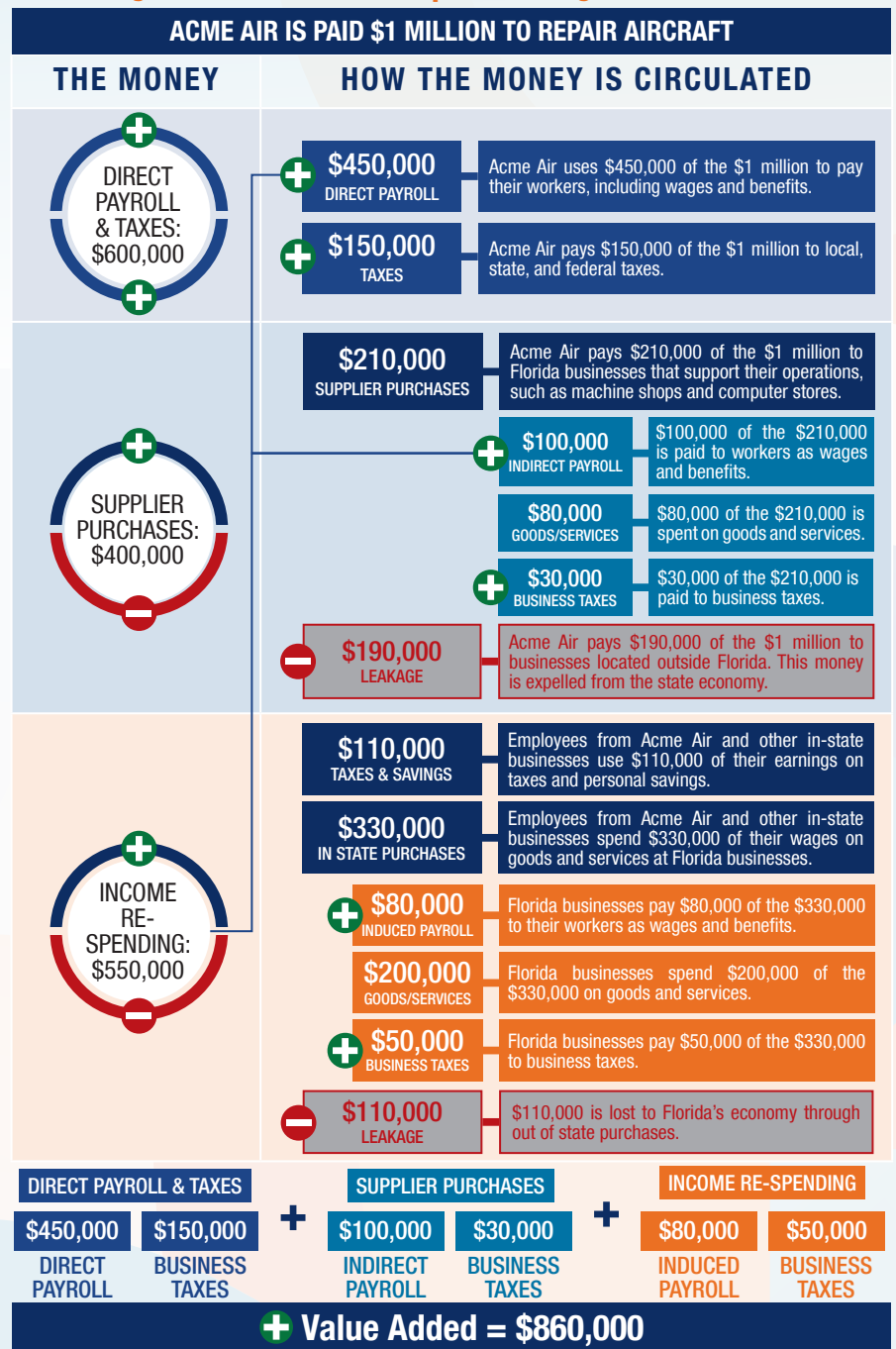


The following graphic is an example of how activity at Florida airports generates economic impacts throughout the state.



## THE ECONOMIC IMPACT OF

# Lake Wales Municipal Airport (X07)



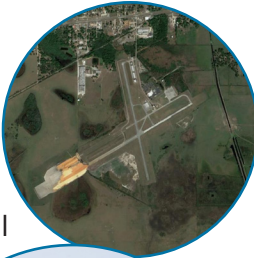
X07



## LAKE WALES MUNICIPAL AIRPORT

Lake Wales Municipal Airport is located in Polk County, about 50 miles east of Tampa. The airport has two intersecting runways, with the longest runway measuring 4,003 feet. The airport accommodates general aviation aircraft and supports many types of general aviation activities.

The airport, which primarily supports skydiving and parachuting activity, has hosted skydiving championships and holds skydiving world records. The airport is often used for recreational flying, such as light sport aviation activities. The airport also supports agricultural and mosquito spraying for the local community. Recently, the airport has experienced an increase in military operations. Flight instructors also use the airport to conduct flight and career training. The airport is engaged in the local community and hosts events such as the Breast Cancer Awareness 5k and Flight Fest. Business tenants at the airport, such as the fixed base operator (FBO), contribute to the airport's economic impacts.



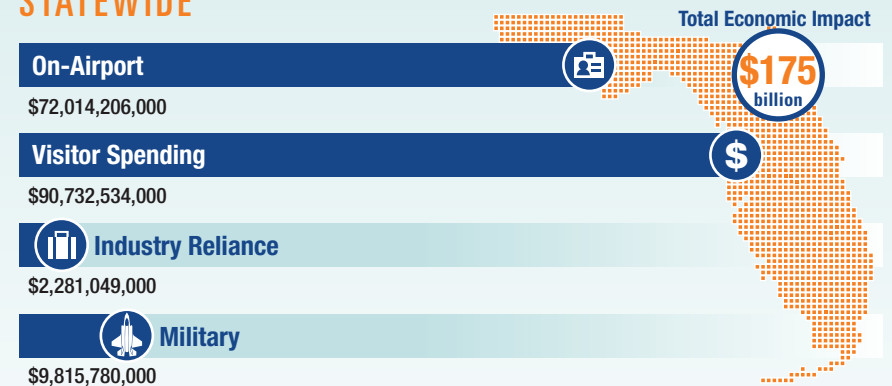
Previous versions of this Study used different terminology to communicate results. The following terms were updated: Direct Impacts changed to On-Airport Impacts and Indirect Impacts changed to Visitor Spending Impacts.

## Florida's Statewide Benefits From Aviation

**Florida realizes significant economic benefits from aviation.** The Florida Department of Transportation completed a comprehensive economic impact analysis to measure these benefits. Benefits measured in the FDOT study considered on-airport impacts, visitor spending impacts, and multiplier impacts.

Florida's 129 public-use airports (including 20 commercial service facilities) are a major economic engine of the State's economy. The aviation system keeps Florida connected to the global marketplace while simultaneously driving local economies. Florida's airports provide space and infrastructure for important activities such as manufacturing, logistics, tourism, and emergency response. Below is a summary of the total statewide economic impact as well as the impact of District 1.

### STATEWIDE



### DISTRICT 1



For more information regarding the results and methodology of this economic impact study, please visit <https://www.fdot.gov/aviation/economicimpact.shtm>