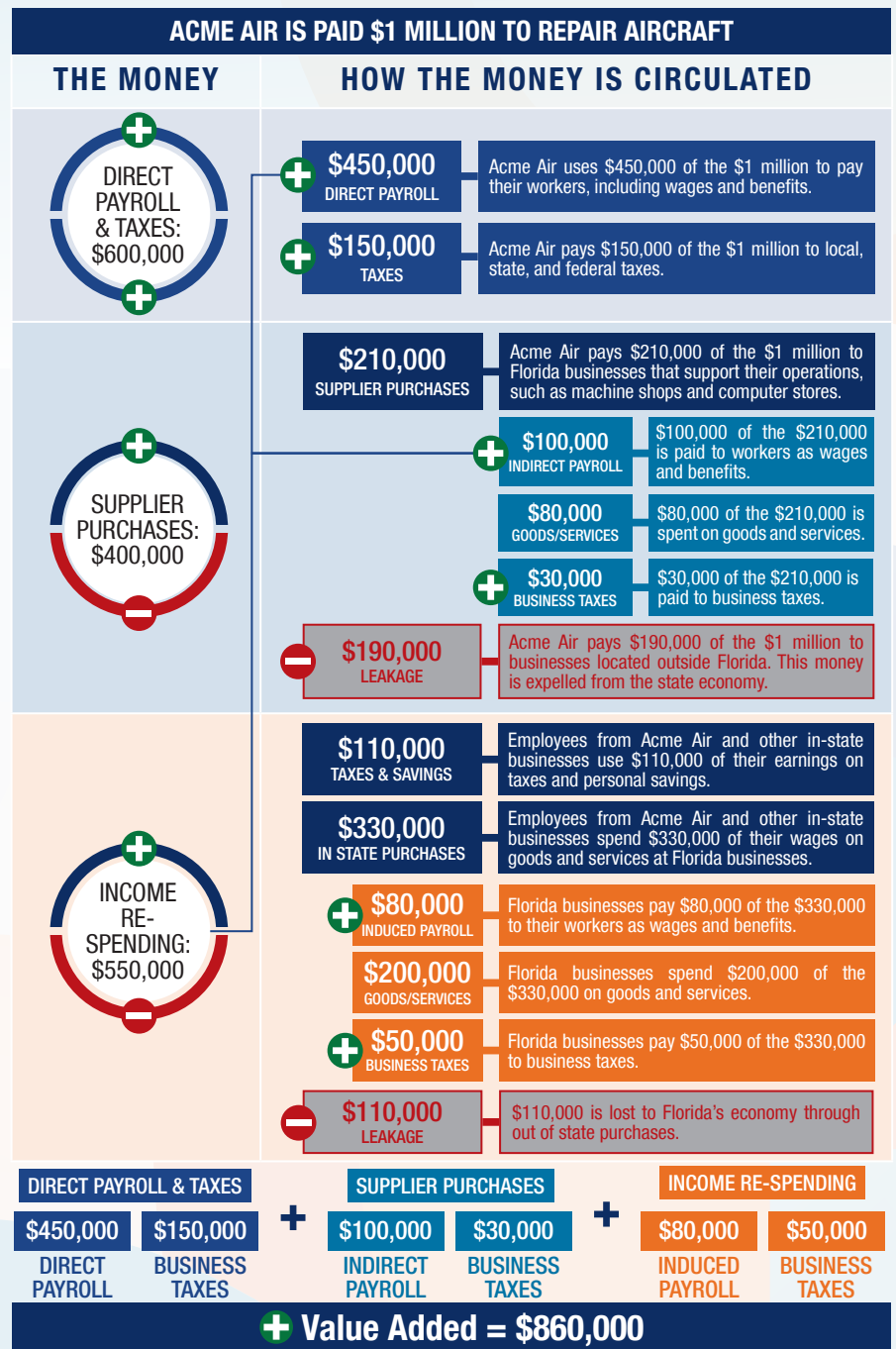


The following graphic is an example of how activity at Florida airports generates economic impacts throughout the state.



THE ECONOMIC IMPACT OF

Gainesville Regional Airport (GNV)

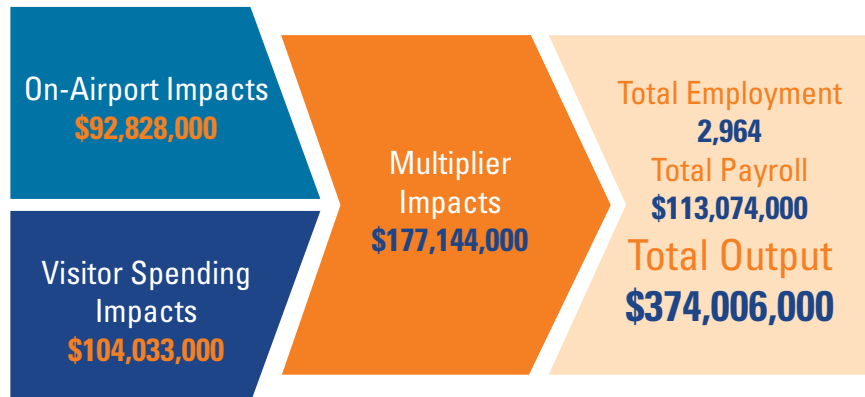


GAINESVILLE REGIONAL AIRPORT

Gainesville Regional Airport is located in Alachua County, approximately three miles from downtown Gainesville. The airport has two runways, with the longest runway measuring 7,501 feet, and a commercial terminal with three passenger boarding bridges (with plans to expand to five boarding bridges). The airport can support all general aviation aircraft and most commercial aviation aircraft.

The airport's location allows it to conveniently serve faculty and students from the University of Florida, NCAA sports teams, and the area's expanding biotech and financial services sectors. The airport supports life-saving emergency medical aviation for important health care entities such as UF Health Shands Hospital and the Malcom Randall VA Medical Center.

The airport accommodates business, law enforcement and forest service aircraft, among others. Flight training operations are common at the airport, as are exploration services such as aerial photography and surveying. The airport is engaged with the local community hosting activities such as fly-ins, fundraisers and Chamber of Commerce events.



Previous versions of this Study used different terminology to communicate results. The following terms were updated: Direct Impacts changed to On-Airport Impacts and Indirect Impacts changed to Visitor Spending Impacts.

Florida's Statewide Benefits From Aviation

Florida realizes significant economic benefits from aviation. The Florida Department of Transportation completed a comprehensive economic impact analysis to measure these benefits. Benefits measured in the FDOT study considered on-airport impacts, visitor spending impacts, and multiplier impacts.

Florida's 129 public-use airports (including 20 commercial service facilities) are a major economic engine of the State's economy. The aviation system keeps Florida connected to the global marketplace while simultaneously driving local economies. Florida's airports provide space and infrastructure for important activities such as manufacturing, logistics, tourism, and emergency response. Below is a summary of the total statewide economic impact as well as the impact of District 2.

STATEWIDE



DISTRICT 2



For more information regarding the results and methodology of this economic impact study, please visit <https://www.fdot.gov/aviation/economicimpact.shtm>