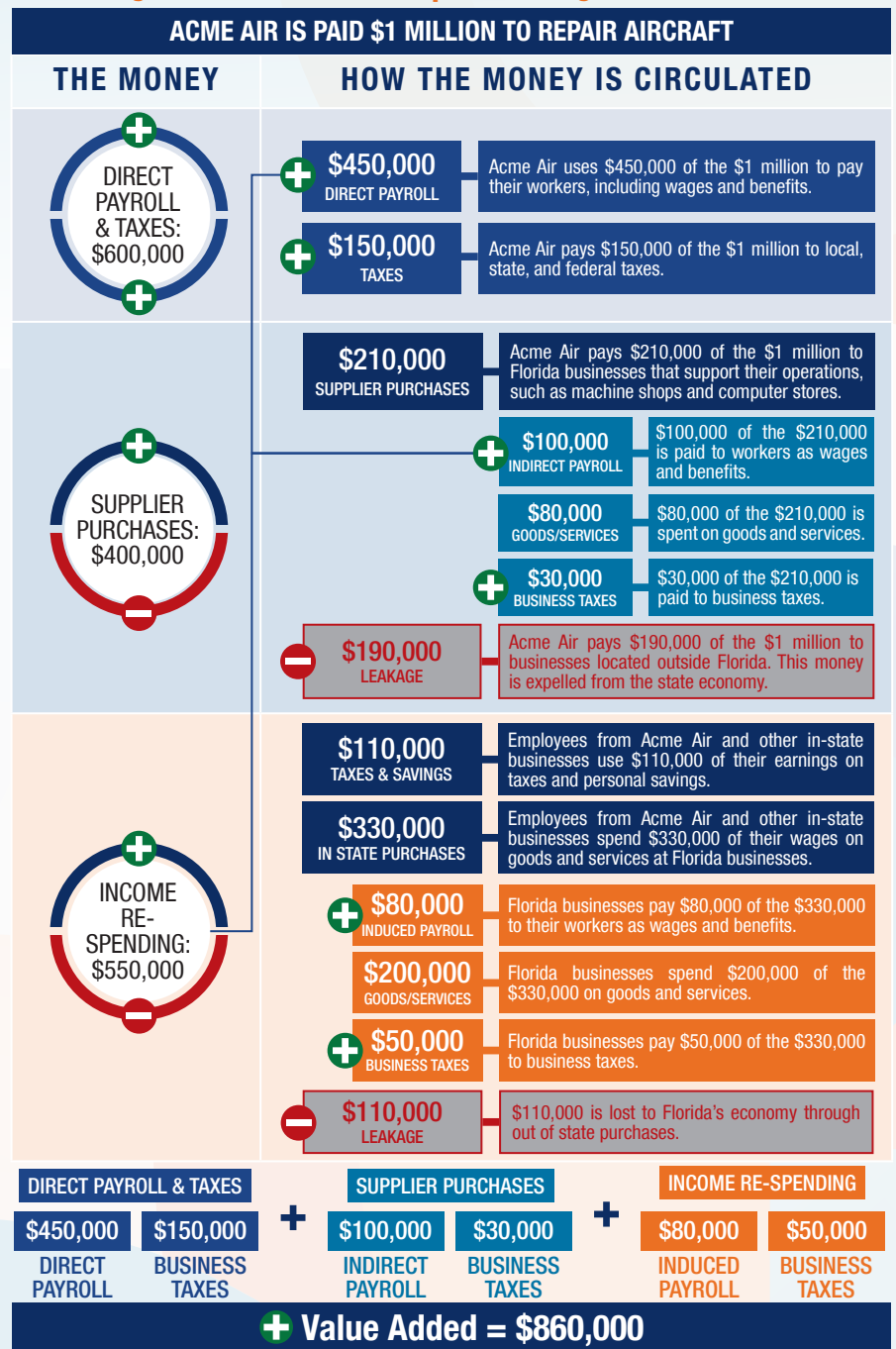


The following graphic is an example of how activity at Florida airports generates economic impacts throughout the state.



THE ECONOMIC IMPACT OF

Kissimmee Gateway Airport (ISM)



ISM



KISSIMMEE GATEWAY AIRPORT

Kissimmee Gateway Airport is located in Osceola County, approximately 17 miles south of downtown Orlando. The airport has two intersecting runways, with the longest runway measuring 6,001 feet. The airport accommodates most general aviation aircraft, including business jets.

The airport primarily supports corporate business activity and recreational flying. Its location near major tourist attractions, such as Walt Disney World, makes the airport a vital part of supporting the region's tourism industry. The Osceola County Sheriffs Aviation Unit and the Osceola County Life Flight Helicopter Ambulance Base are both located at the airport. The airport also supports agricultural spraying, cargo activity, news reporting, aerial photography, and environmental patrols. Flight instructors use the airport to provide flight training and to further aviation career training and education. The airport's fixed base operator (FBO) is fully equipped to serve the needs of local and transient users.



On-Airport Impacts
\$263,595,000

Visitor Spending
Impacts
\$54,001,000

Multiplier
Impacts
\$305,318,000

Total Employment
4,537

Total Payroll
\$210,216,000

Total Output
\$622,914,000

Previous versions of this Study used different terminology to communicate results. The following terms were updated: Direct Impacts changed to On-Airport Impacts and Indirect Impacts changed to Visitor Spending Impacts.

Florida's Statewide Benefits From Aviation

Florida realizes significant economic benefits from aviation. The Florida Department of Transportation completed a comprehensive economic impact analysis to measure these benefits. Benefits measured in the FDOT study considered on-airport impacts, visitor spending impacts, and multiplier impacts.

Florida's 129 public-use airports (including 20 commercial service facilities) are a major economic engine of the State's economy. The aviation system keeps Florida connected to the global marketplace while simultaneously driving local economies. Florida's airports provide space and infrastructure for important activities such as manufacturing, logistics, tourism, and emergency response. Below is a summary of the total statewide economic impact as well as the impact of District 5.

STATEWIDE

On-Airport

\$72,014,206,000

Visitor Spending

\$90,732,534,000

Industry Reliance

\$2,281,049,000

Military

\$9,815,780,000

Total Economic Impact

\$175
billion

DISTRICT 5

On-Airport

\$20,528,246,000

Visitor Spending

\$29,224,709,000

Military

\$850,499,000

Total Economic Impact

\$51
billion

For more information regarding the results and methodology of this economic impact study, please visit <https://www.fdot.gov/aviation/economicimpact.shtm>