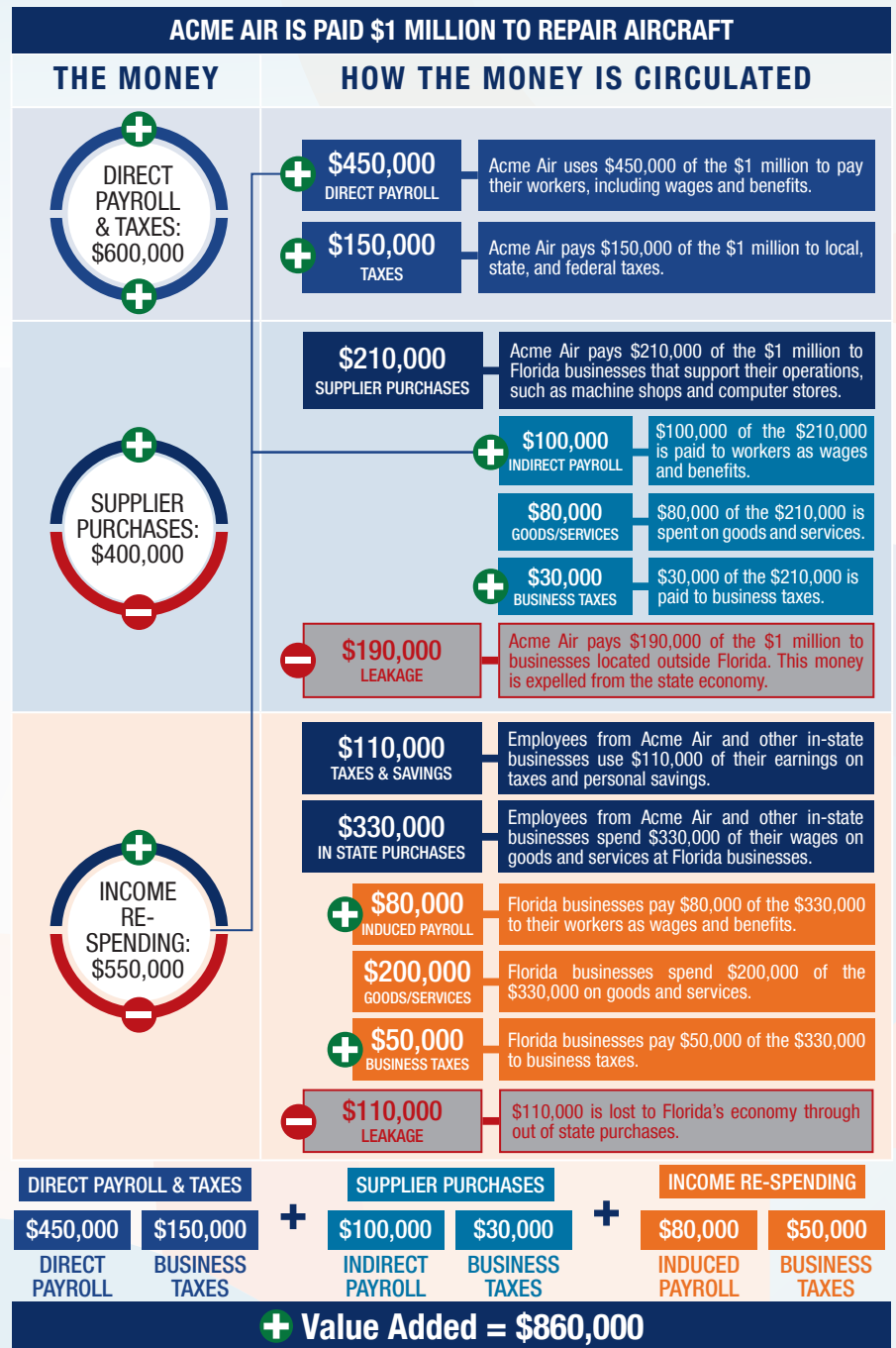


The following graphic is an example of how activity at Florida airports generates economic impacts throughout the state.



THE ECONOMIC IMPACT OF

Umatilla Municipal Airport (X23)



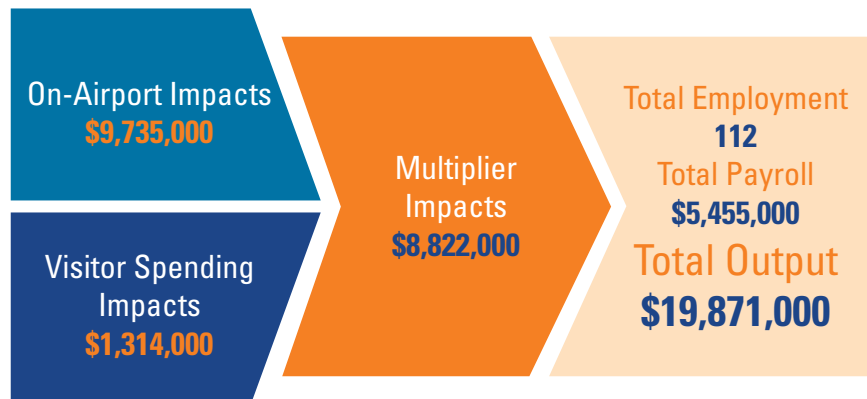
X23



UMATILLA MUNICIPAL AIRPORT

Umatilla Municipal Airport is located in Lake County, approximately 30 miles north of Orlando. The airport has one runway that measures 2,500 feet. The airport serves a mix of local business activity and recreational users. The airport's location is convenient for local pilots to base their aircraft and for flight instructors to provide flight lessons.

A fixed-based operator (FBO) at the airport provides 24-hour self-serve fuel, with the cheapest fuel prices in the area. The airport is a great stop-over for pilots who are flying through Central Florida, and the airport provides two courtesy cars for visitors to take trips to historic downtown Umatilla. The airport hosts an annual open house event that offers free flights for kids. The airport also hosts an annual Business After Hours to showcase the airport to the local residents.



Previous versions of this Study used different terminology to communicate results. The following terms were updated: Direct Impacts changed to On-Airport Impacts and Indirect Impacts changed to Visitor Spending Impacts.

Florida's Statewide Benefits From Aviation

Florida realizes significant economic benefits from aviation. The Florida Department of Transportation completed a comprehensive economic impact analysis to measure these benefits. Benefits measured in the FDOT study considered on-airport impacts, visitor spending impacts, and multiplier impacts.

Florida's 129 public-use airports (including 20 commercial service facilities) are a major economic engine of the State's economy. The aviation system keeps Florida connected to the global marketplace while simultaneously driving local economies. Florida's airports provide space and infrastructure for important activities such as manufacturing, logistics, tourism, and emergency response. Below is a summary of the total statewide economic impact as well as the impact of District 5.

STATEWIDE



DISTRICT 5



For more information regarding the results and methodology of this economic impact study, please visit <https://www.fdot.gov/aviation/economicimpact.shtm>