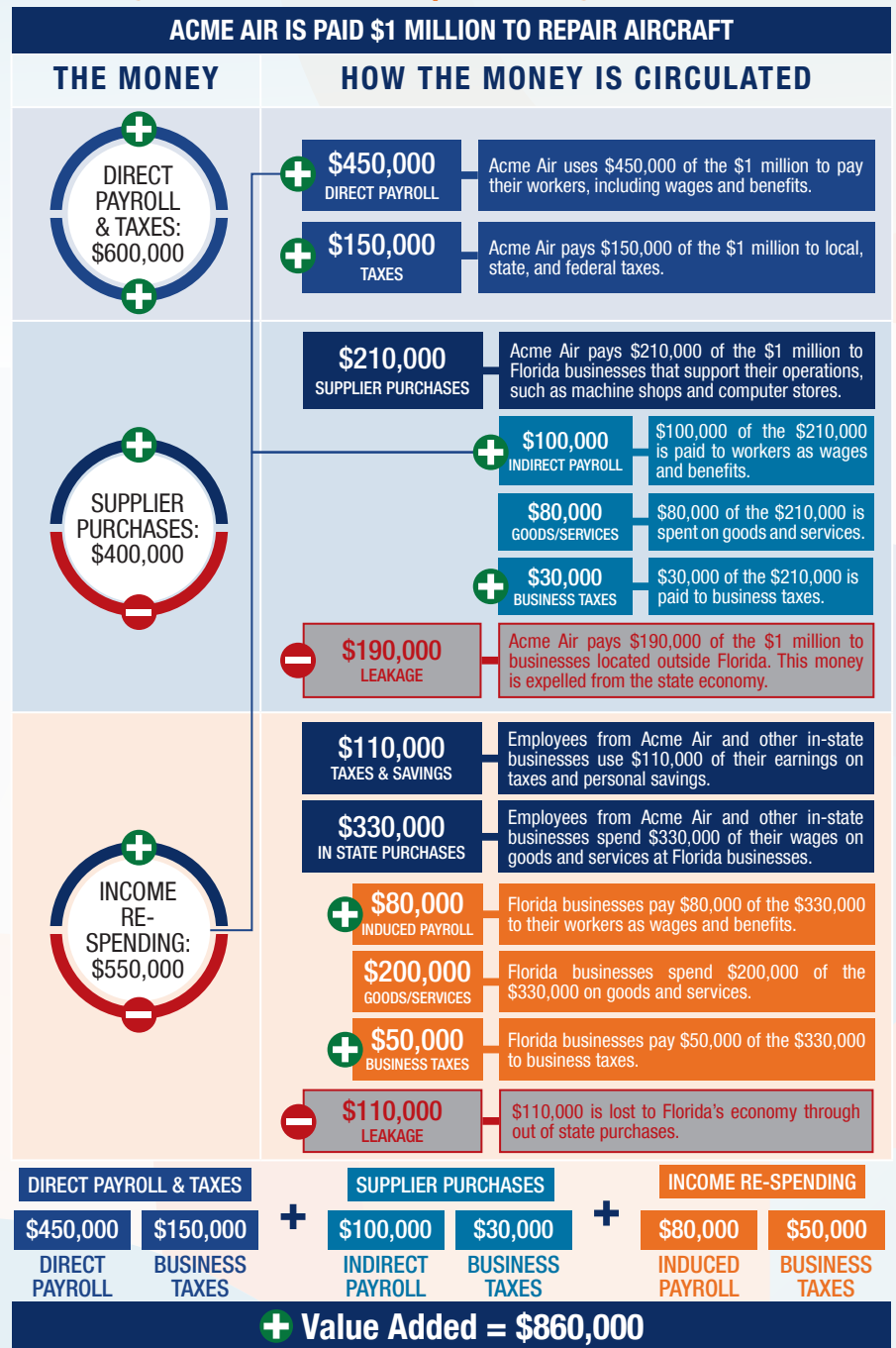


The following graphic is an example of how activity at Florida airports generates economic impacts throughout the state.



THE ECONOMIC IMPACT OF

Destin-Fort Walton Beach Airport (VPS)



DESTIN-FORT WALTON BEACH AIRPORT

Destin-Fort Walton Beach Airport is located in Okaloosa County along Florida's Gulf Coast, approximately seven miles north of downtown Fort Walton Beach. The airport has two runways, the longest measuring 11,987 feet. The airport operates as the primary commercial service airport in the area, serving a variety of domestic destinations.

The airport primarily supports tourist and business activity through commercial air service. The airport is colocated with Eglin Air Force Base and is considered a leading example of a "Joint Use Airport," which indicates an airport is owned by the Department of Defense and both military and civilian aircraft have shared use of the airfield. The airport added 30 percent more passengers in 2017 and is one of the fastest growing airports in Florida and the country. The airport provides 50 non-stop flights daily and direct service to 27 cities, which contributes to tourism revenue in the region.



Previous versions of this Study used different terminology to communicate results. The following terms were updated: Direct Impacts changed to On-Airport Impacts and Indirect Impacts changed to Visitor Spending Impacts.

Florida's Statewide Benefits From Aviation

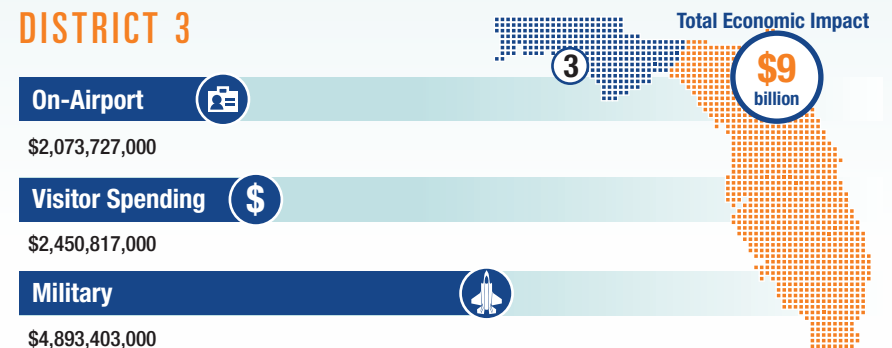
Florida realizes significant economic benefits from aviation. The Florida Department of Transportation completed a comprehensive economic impact analysis to measure these benefits. Benefits measured in the FDOT study considered on-airport impacts, visitor spending impacts, and multiplier impacts.

Florida's 129 public-use airports (including 20 commercial service facilities) are a major economic engine of the State's economy. The aviation system keeps Florida connected to the global marketplace while simultaneously driving local economies. Florida's airports provide space and infrastructure for important activities such as manufacturing, logistics, tourism, and emergency response. Below is a summary of the total statewide economic impact as well as the impact of District 3.

STATEWIDE



DISTRICT 3



For more information regarding the results and methodology of this economic impact study, please visit <https://www.fdot.gov/aviation/economicimpact.shtm>