

The following graphic is an example of how activity at Florida airports generates economic impacts throughout the state.

ACME AIR IS PAID \$1 MILLION TO REPAIR AIRCRAFT

THE MONEY



HOW THE MONEY IS CIRCULATED

+\$450,000
DIRECT PAYROLL
Acme Air uses \$450,000 of the \$1 million to pay their workers, including wages and benefits.

+\$150,000
TAXES
Acme Air pays \$150,000 of the \$1 million to local, state, and federal taxes.

\$210,000
SUPPLIER PURCHASES
Acme Air pays \$210,000 of the \$1 million to Florida businesses that support their operations, such as machine shops and computer stores.

+\$100,000
INDIRECT PAYROLL
\$100,000 of the \$210,000 is paid to workers as wages and benefits.

\$80,000
GOODS/SERVICES
\$80,000 of the \$210,000 is spent on goods and services.

+\$30,000
BUSINESS TAXES
\$30,000 of the \$210,000 is paid to business taxes.

-\$190,000
LEAKAGE
Acme Air pays \$190,000 of the \$1 million to businesses located outside Florida. This money is expelled from the state economy.

\$110,000
TAXES & SAVINGS
Employees from Acme Air and other in-state businesses use \$110,000 of their earnings on taxes and personal savings.

\$330,000
IN STATE PURCHASES
Employees from Acme Air and other in-state businesses spend \$330,000 of their wages on goods and services at Florida businesses.

+\$80,000
INDUCED PAYROLL
Florida businesses pay \$80,000 of the \$330,000 to their workers as wages and benefits.

\$200,000
GOODS/SERVICES
Florida businesses spend \$200,000 of the \$330,000 on goods and services.

+\$50,000
BUSINESS TAXES
Florida businesses pay \$50,000 of the \$330,000 to business taxes.

-\$110,000
LEAKAGE
\$110,000 is lost to Florida's economy through out of state purchases.

DIRECT PAYROLL & TAXES

\$450,000
DIRECT PAYROLL
\$150,000
BUSINESS TAXES

SUPPLIER PURCHASES

\$100,000
INDIRECT PAYROLL
\$30,000
BUSINESS TAXES

INCOME RE-SPENDING

\$80,000
INDUCED PAYROLL
\$50,000
BUSINESS TAXES

+ Value Added = \$860,000

THE ECONOMIC IMPACT OF

Boca Raton Airport (BCT)



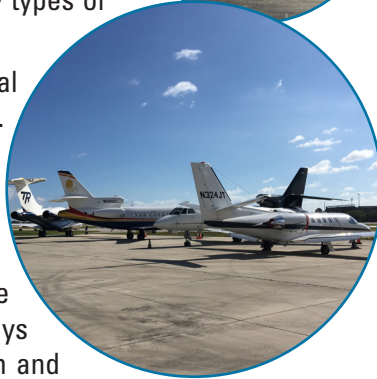
BCT



BOCA RATON AIRPORT

Boca Raton Airport is located in Palm Beach County, approximately 18 miles north of downtown Fort Lauderdale. The airport has one runway that measures 6,276 feet. The airport can accommodate large business jet aircraft and serves many types of general aviation activities.

The airport primarily supports recreational flying, business activity, and flight training. Charter flights are also available. Several restaurants and a hotel are located at the airport. Due to the large number of corporate headquarters in Boca Raton, the airport is a frequent arrival and departure point for high profile visitors. The airport plays an important role in the business attraction and retention goals of the Greater Boca Raton area. The airport supports the local community by hosting community events and student airport days. Two fixed base operators (FBOs) and two aircraft repair maintenance shops are located at the airport and serve the needs of local and transient users.



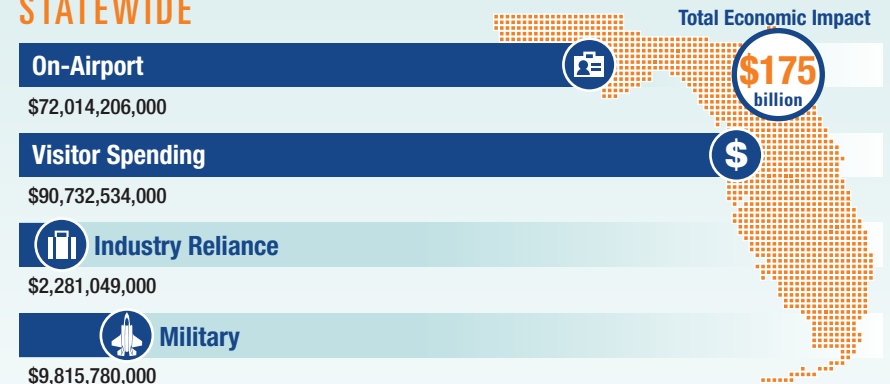
Previous versions of this Study used different terminology to communicate results. The following terms were updated: Direct Impacts changed to On-Airport Impacts and Indirect Impacts changed to Visitor Spending Impacts.

Florida's Statewide Benefits From Aviation

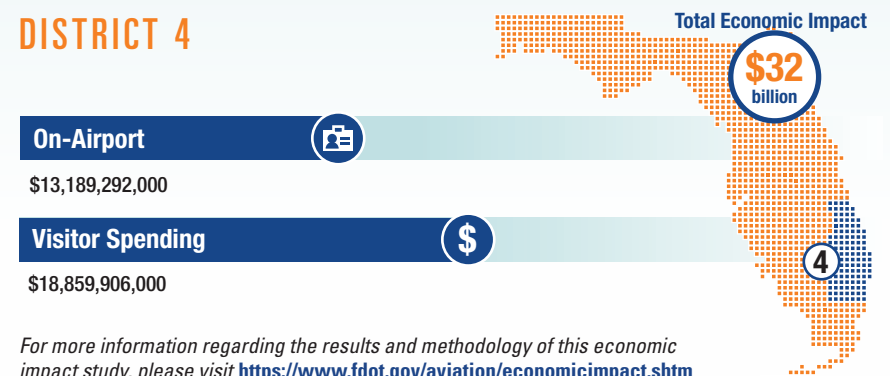
Florida realizes significant economic benefits from aviation. The Florida Department of Transportation completed a comprehensive economic impact analysis to measure these benefits. Benefits measured in the FDOT study considered on-airport impacts, visitor spending impacts, and multiplier impacts.

Florida's 129 public-use airports (including 20 commercial service facilities) are a major economic engine of the State's economy. The aviation system keeps Florida connected to the global marketplace while simultaneously driving local economies. Florida's airports provide space and infrastructure for important activities such as manufacturing, logistics, tourism, and emergency response. Below is a summary of the total statewide economic impact as well as the impact of District 4.

STATEWIDE



DISTRICT 4



For more information regarding the results and methodology of this economic impact study, please visit <https://www.fdot.gov/aviation/economicimpact.shtm>