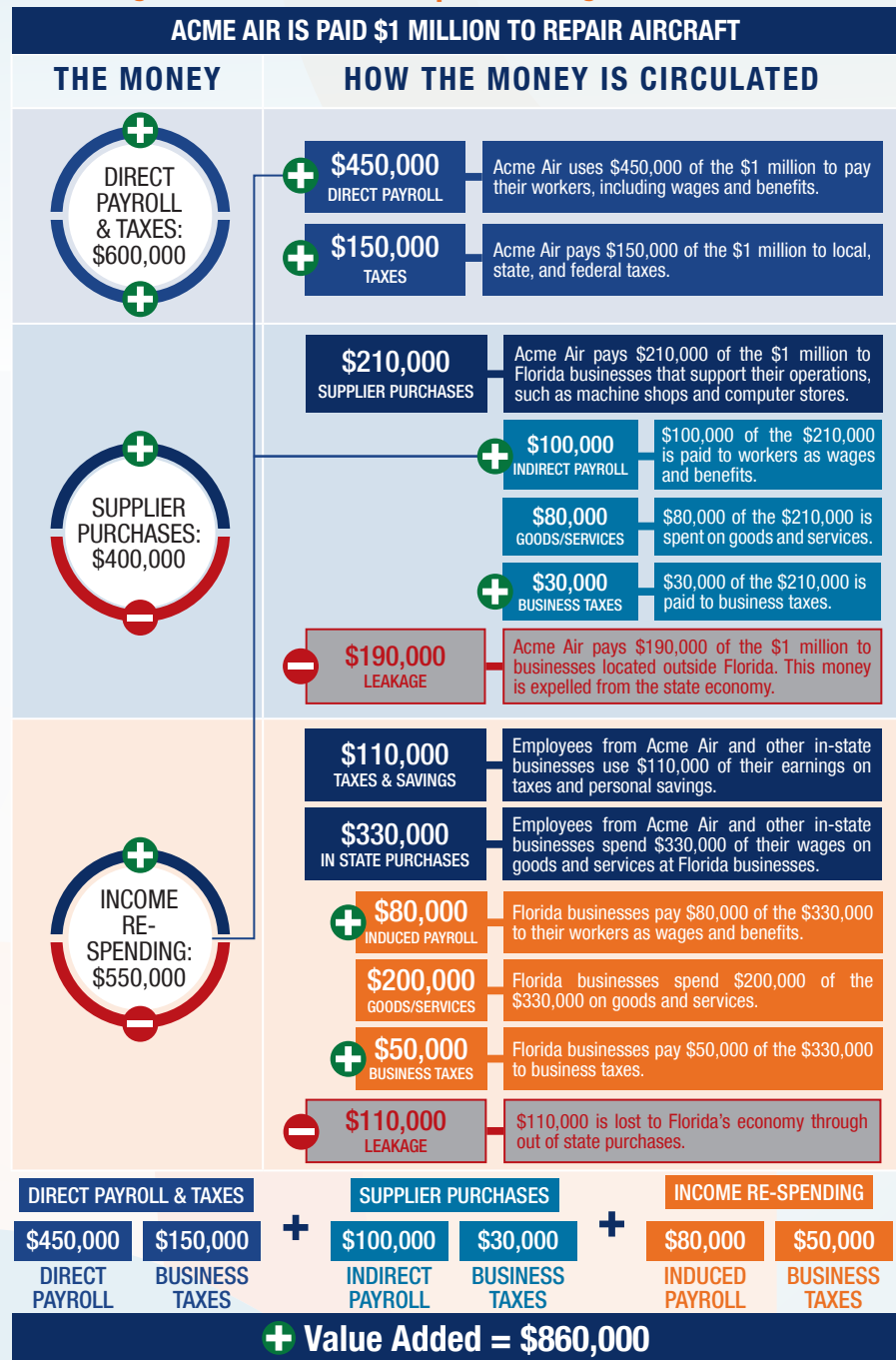


The following graphic is an example of how activity at Florida airports generates economic impacts throughout the state.



THE ECONOMIC IMPACT OF

Witham Field (SUA)



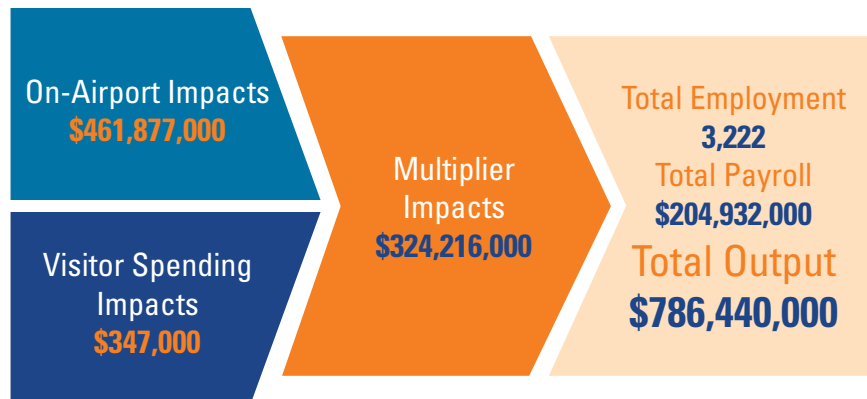
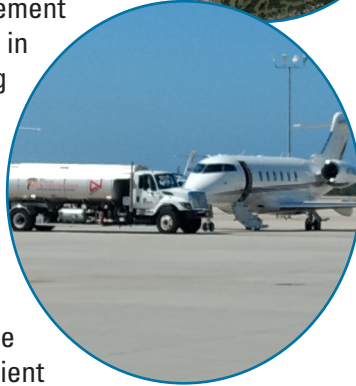
SUA



WITHAM FIELD

Witham Field is located in Martin County, about one mile southeast of Stuart's central business district. The field has three runways, with the longest runway measuring 5,828 feet. The airport primarily serves the general aviation needs of the local community. The airport has a voluntary noise abatement program and voluntary night time curfew in effect to lessen the impact on surrounding neighborhoods.

Witham Field primarily supports business and corporate traffic. The airport also supports recreational activity, flight training, and chartered flights. Law enforcement and air ambulance operations are also common. The airport's fixed base operators (FBOs) serve both local and transient users. The airport's tenants, including an aircraft financing business, help contribute to the airport's direct economic impact. The airport engages with the community and hosts the annual Stuart Air Show, a three-day event whose visitors contribute to the airport's economic impacts.



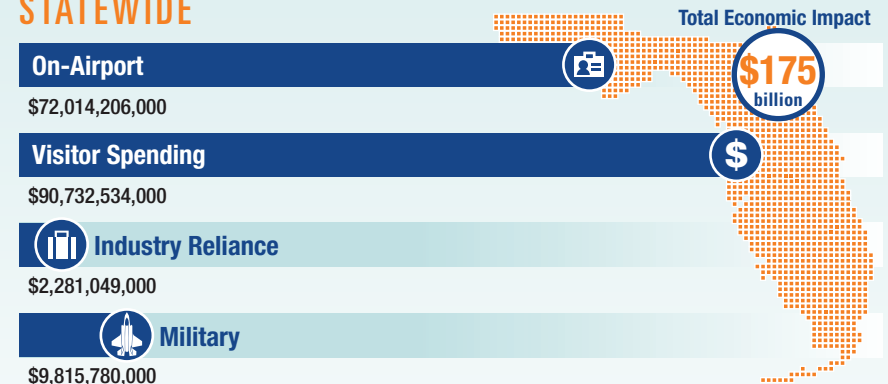
Previous versions of this Study used different terminology to communicate results. The following terms were updated: Direct Impacts changed to On-Airport Impacts and Indirect Impacts changed to Visitor Spending Impacts.

Florida's Statewide Benefits From Aviation

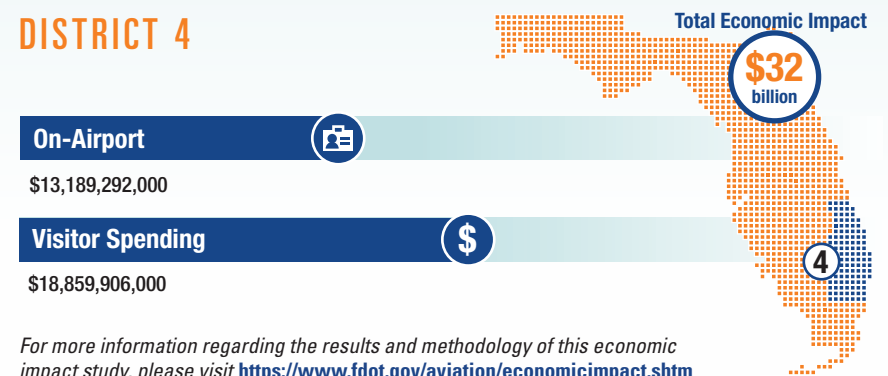
Florida realizes significant economic benefits from aviation. The Florida Department of Transportation completed a comprehensive economic impact analysis to measure these benefits. Benefits measured in the FDOT study considered on-airport impacts, visitor spending impacts, and multiplier impacts.

Florida's 129 public-use airports (including 20 commercial service facilities) are a major economic engine of the State's economy. The aviation system keeps Florida connected to the global marketplace while simultaneously driving local economies. Florida's airports provide space and infrastructure for important activities such as manufacturing, logistics, tourism, and emergency response. Below is a summary of the total statewide economic impact as well as the impact of District 4.

STATEWIDE



DISTRICT 4



For more information regarding the results and methodology of this economic impact study, please visit <https://www.fdot.gov/aviation/economicimpact.shtm>