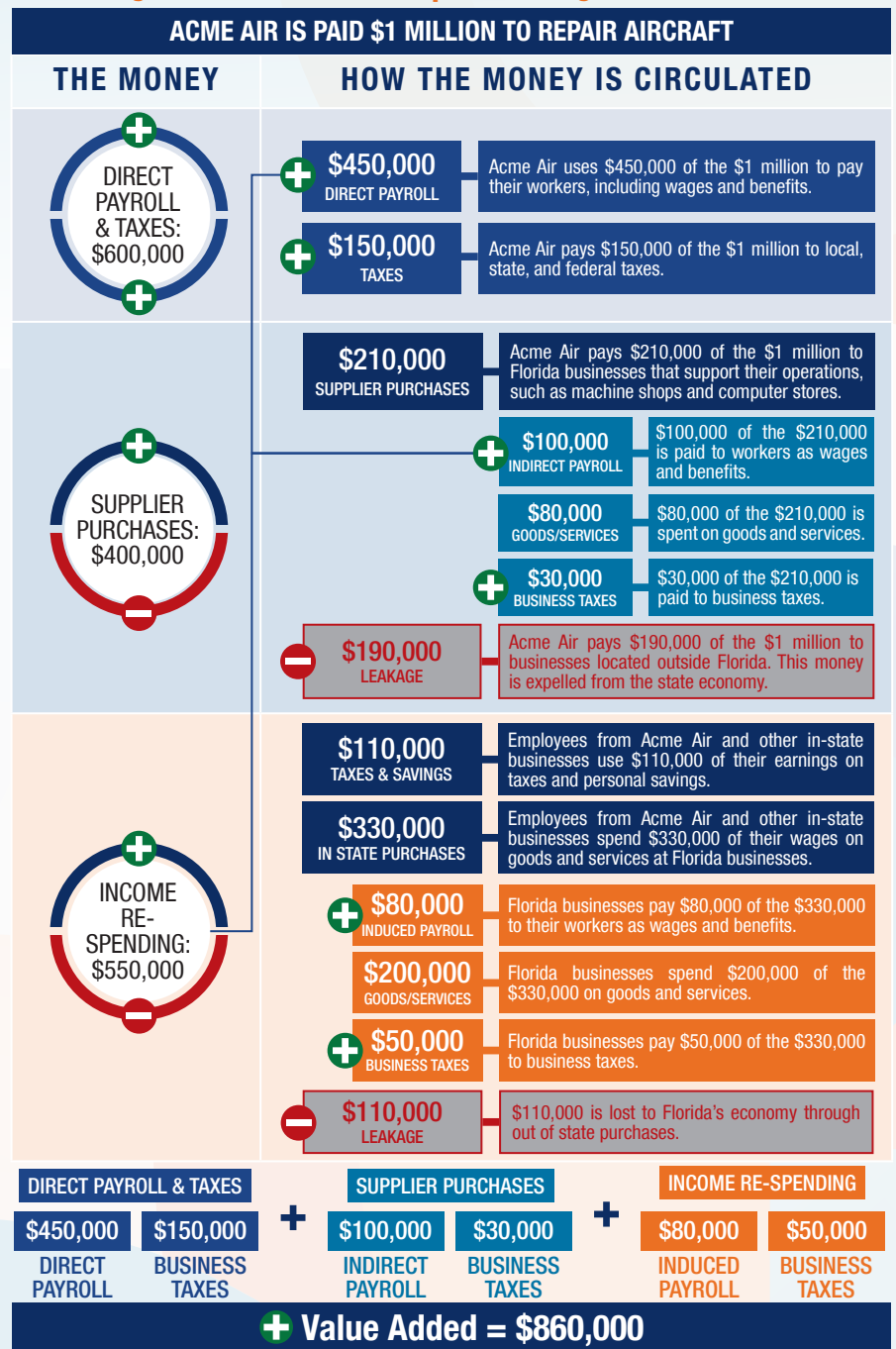


The following graphic is an example of how activity at Florida airports generates economic impacts throughout the state.



THE ECONOMIC IMPACT OF

Bartow Municipal Airport (BOW)



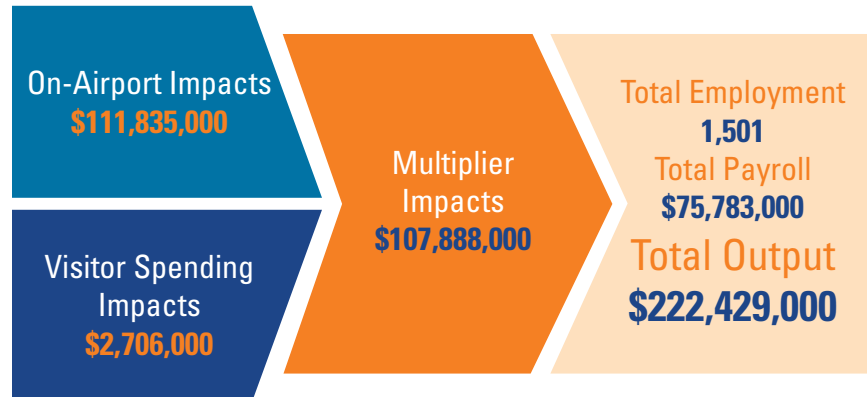
BOW



BARTOW MUNICIPAL AIRPORT

Bartow Municipal Airport is located in Polk County, approximately 40 miles east of Tampa. The airport has three runways, with the longest two measuring 5,000 feet each. The airport accommodates smaller general aviation and business jet aircraft and serves many types of general aviation activities. The airport's terminal is ideal for serving both local and transient users.

The airport primarily supports recreational flying, but it is occasionally used for agricultural spraying and mosquito control. The airport also supports business activity for the golf resort industry and local citrus industry, and supports the preservation of a large area of wetlands. There is a growing flight school at the airport that is used by multiple flight instructors. Services based at the airport include emergency medical aviation, such as emergency helicopter transport, and the sheriff's department, which provides police and law enforcement. An aircraft paint shop and aircraft maintenance business are also at the airport.



Previous versions of this Study used different terminology to communicate results. The following terms were updated: Direct Impacts changed to On-Airport Impacts and Indirect Impacts changed to Visitor Spending Impacts.

Florida's Statewide Benefits From Aviation

Florida realizes significant economic benefits from aviation. The Florida Department of Transportation completed a comprehensive economic impact analysis to measure these benefits. Benefits measured in the FDOT study considered on-airport impacts, visitor spending impacts, and multiplier impacts.

Florida's 129 public-use airports (including 20 commercial service facilities) are a major economic engine of the State's economy. The aviation system keeps Florida connected to the global marketplace while simultaneously driving local economies. Florida's airports provide space and infrastructure for important activities such as manufacturing, logistics, tourism, and emergency response. Below is a summary of the total statewide economic impact as well as the impact of District 1.

STATEWIDE



DISTRICT 1



For more information regarding the results and methodology of this economic impact study, please visit <https://www.fdot.gov/aviation/economicimpact.shtm>