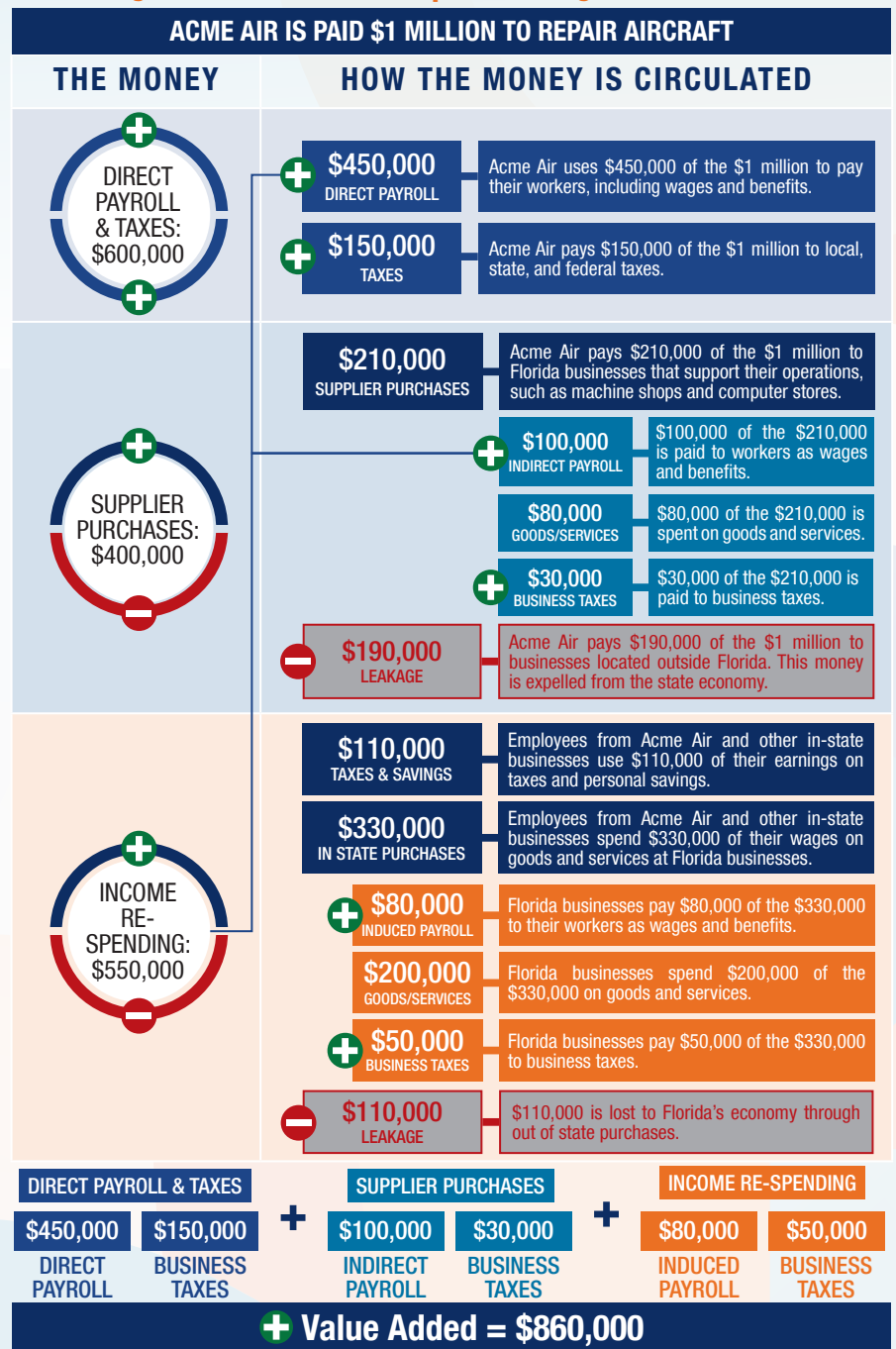


The following graphic is an example of how activity at Florida airports generates economic impacts throughout the state.



## THE ECONOMIC IMPACT OF

# Lakeland Linder International Airport (LAL)



LAL



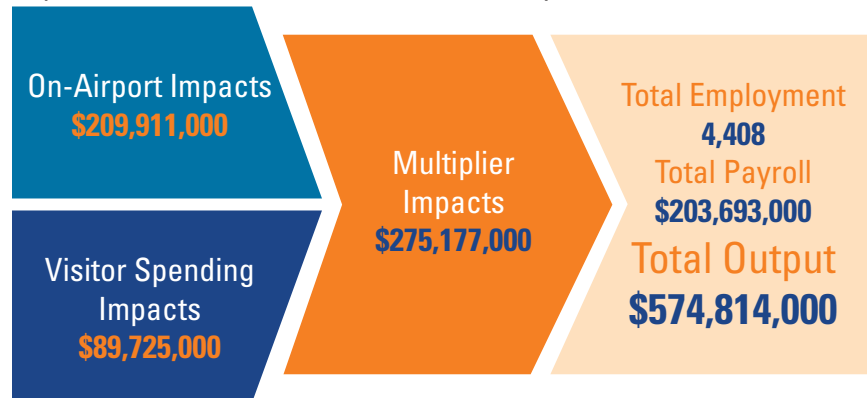
**FDOT**

## LAKELAND LINDER INTERNATIONAL AIRPORT

Lakeland Linder International Airport is located in Polk County, about 27 miles east of downtown Tampa. The airport has two intersecting runways, with the longest runway measuring 8,500 feet. The airport accommodates general aviation aircraft and large narrow body commercial service aircraft. The airport supports a wide range of activity, including charter flights, business operations, law enforcement operations, emergency medical aviation, environmental patrol flights, and recreational aviation activity. The airport has over 80 on-site businesses and hosts over 20 social events annually. Education and flight training are also prevalent, with four flight schools located at the airport, including the largest high school flying club in the nation.



The National Oceanic and Atmospheric Administration (NOAA) Aircraft Operations Center is also located at the airport, housing its fleet of Hurricane Hunter aircraft. The airport hosts the annual Sun 'n Fun International Fly-In and Expo. Averaging over 200,000 attendees, this event is Florida's largest aviation convention, turning the airport into the busiest in the nation for six days.



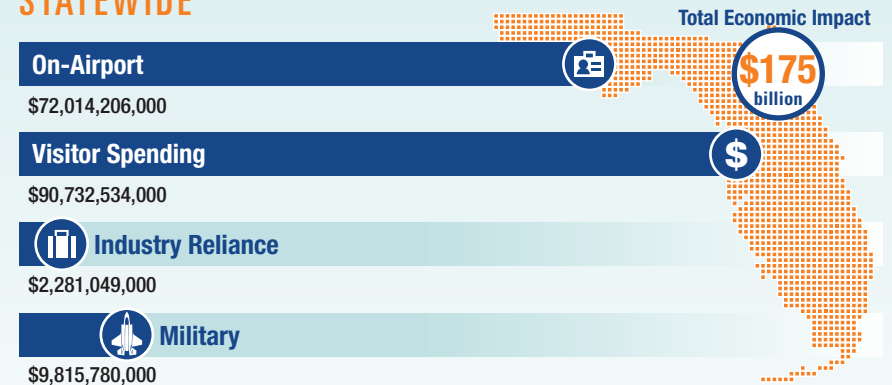
Previous versions of this Study used different terminology to communicate results. The following terms were updated: Direct Impacts changed to On-Airport Impacts and Indirect Impacts changed to Visitor Spending Impacts.

## Florida's Statewide Benefits From Aviation

**Florida realizes significant economic benefits from aviation.** The Florida Department of Transportation completed a comprehensive economic impact analysis to measure these benefits. Benefits measured in the FDOT study considered on-airport impacts, visitor spending impacts, and multiplier impacts.

Florida's 129 public-use airports (including 20 commercial service facilities) are a major economic engine of the State's economy. The aviation system keeps Florida connected to the global marketplace while simultaneously driving local economies. Florida's airports provide space and infrastructure for important activities such as manufacturing, logistics, tourism, and emergency response. Below is a summary of the total statewide economic impact as well as the impact of District 1.

### STATEWIDE



### DISTRICT 1



For more information regarding the results and methodology of this economic impact study, please visit <https://www.fdot.gov/aviation/economicimpact.shtm>