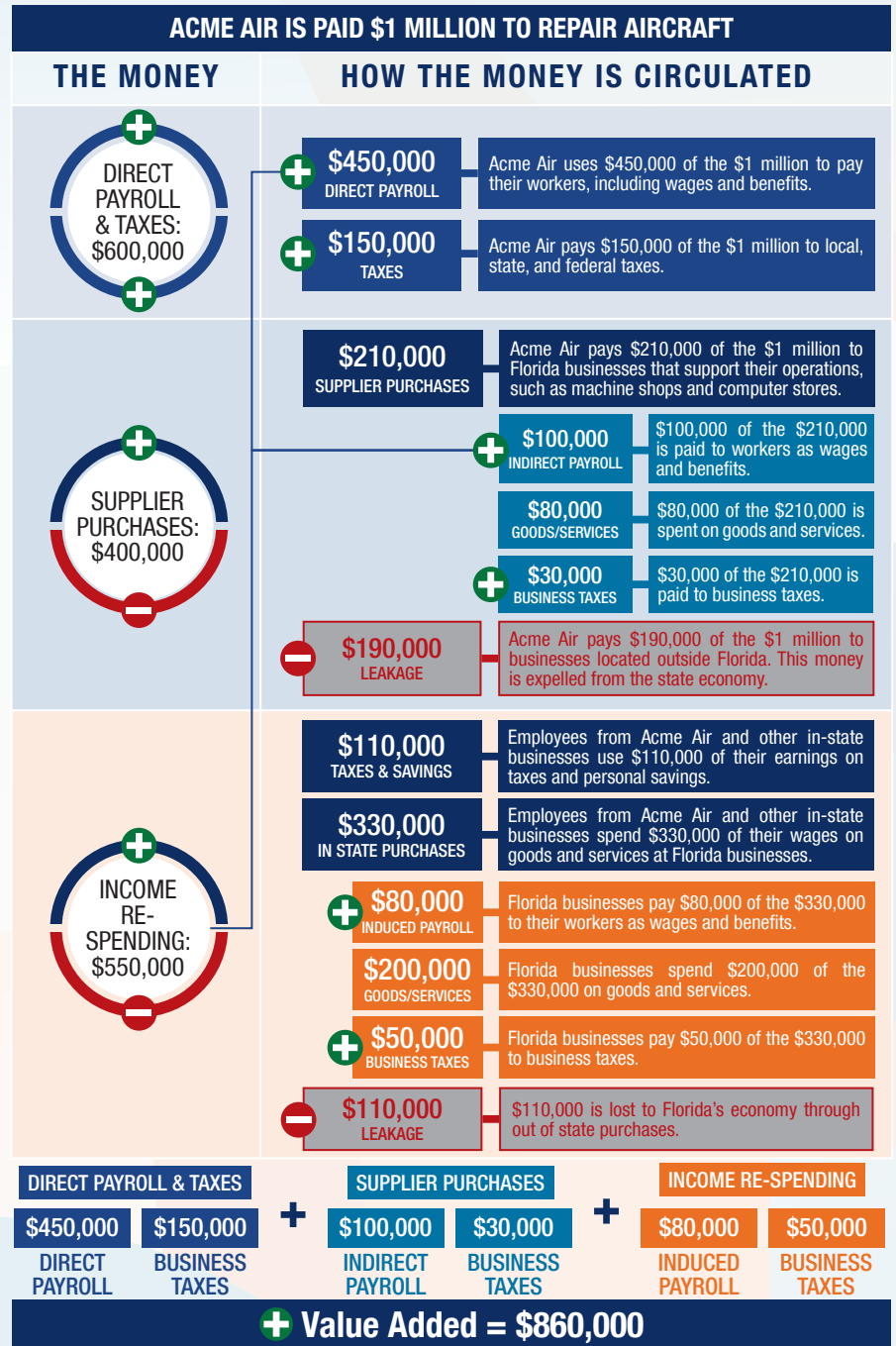


The following graphic is an example of how activity at Florida airports generates economic impacts throughout the state.



THE ECONOMIC IMPACT OF Wakulla County Airport (2J0)



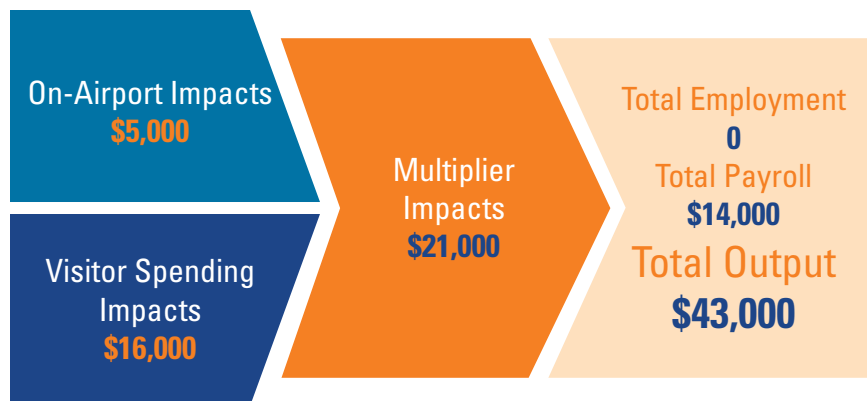
2J0



WAKULLA COUNTY AIRPORT

Wakulla County Airport is located near the town of Panacea, approximately 30 miles south of Tallahassee. The airport has one turf runway, measuring 2,590 feet. The airport supports the adjacent Tarpine fly-in community and general aviation aircraft. The airport has been in operation for 54 years, and presently supports recreational flying, flight training, military training, and visiting aircraft. Emergency medical aviation and local law enforcement also occasionally use the airport.

Local seafood restaurants and fishing attract recreational users and visitors to the area. The airport also hosts the annual Wakulla Wings and Wheels Fly-in, when local residents may take a plane ride, view military aircraft, and explore the booths of local vendors.



Previous versions of this Study used different terminology to communicate results. The following terms were updated: Direct Impacts changed to On-Airport Impacts and Indirect Impacts changed to Visitor Spending Impacts.

Florida's Statewide Benefits From Aviation

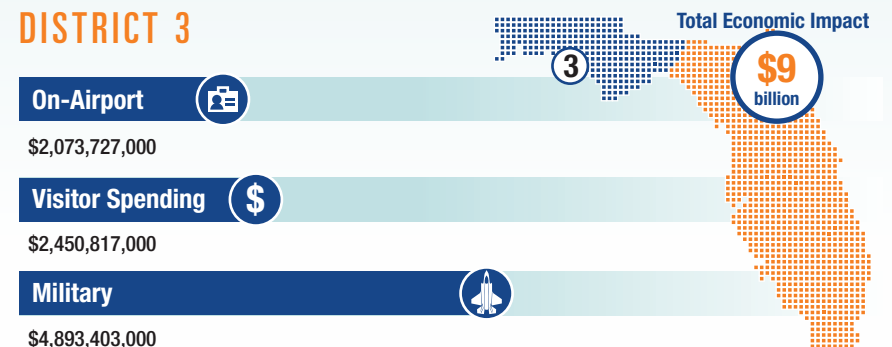
Florida realizes significant economic benefits from aviation. The Florida Department of Transportation completed a comprehensive economic impact analysis to measure these benefits. Benefits measured in the FDOT study considered on-airport impacts, visitor spending impacts, and multiplier impacts.

Florida's 129 public-use airports (including 20 commercial service facilities) are a major economic engine of the State's economy. The aviation system keeps Florida connected to the global marketplace while simultaneously driving local economies. Florida's airports provide space and infrastructure for important activities such as manufacturing, logistics, tourism, and emergency response. Below is a summary of the total statewide economic impact as well as the impact of District 3.

STATEWIDE



DISTRICT 3



For more information regarding the results and methodology of this economic impact study, please visit <https://www.fdot.gov/aviation/economicimpact.shtm>