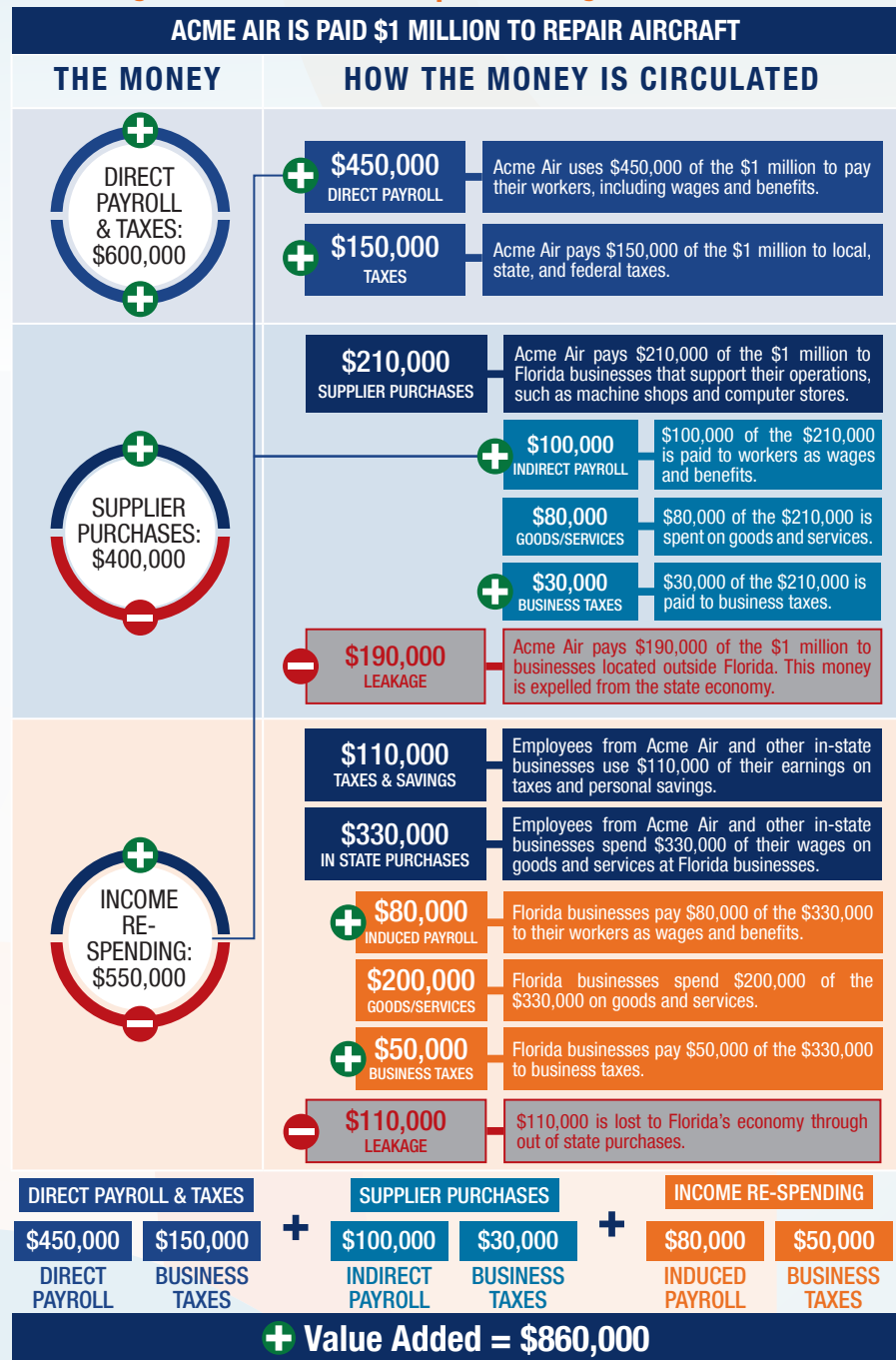


The following graphic is an example of how activity at Florida airports generates economic impacts throughout the state.



## THE ECONOMIC IMPACT OF

# North Palm Beach County General Aviation Airport (F45)



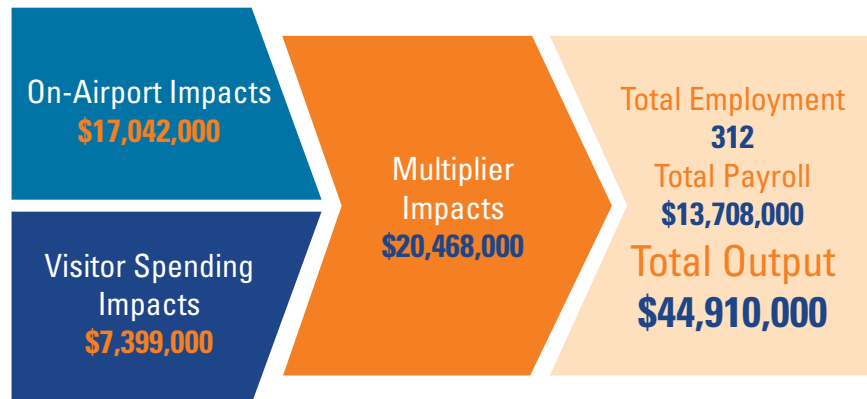
F45



## NORTH PALM BEACH COUNTY GENERAL AVIATION AIRPORT

North Palm Beach County General Aviation Airport is located along Florida's Atlantic Coast, approximately 14 miles northwest of West Palm Beach. The airport has three runways, with the longest runway measuring 4,303 feet. The airport accommodates general aviation aircraft and smaller business jet aircraft.

The airport primarily supports recreational flying, business activity, and flight training. The airport also supports emergency medical aviation, law enforcement operations, and public charters. Local businesses in the community rely on the airport for events such as the Honda Classic Golf Tournament. Flight instructors use the airport to provide flight and helicopter training and the airport also offers aircraft maintenance and self-service fuel for users.



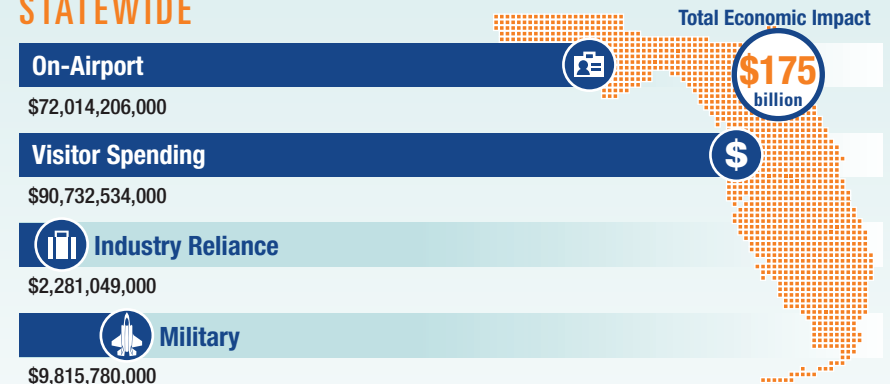
Previous versions of this Study used different terminology to communicate results. The following terms were updated: Direct Impacts changed to On-Airport Impacts and Indirect Impacts changed to Visitor Spending Impacts.

## Florida's Statewide Benefits From Aviation

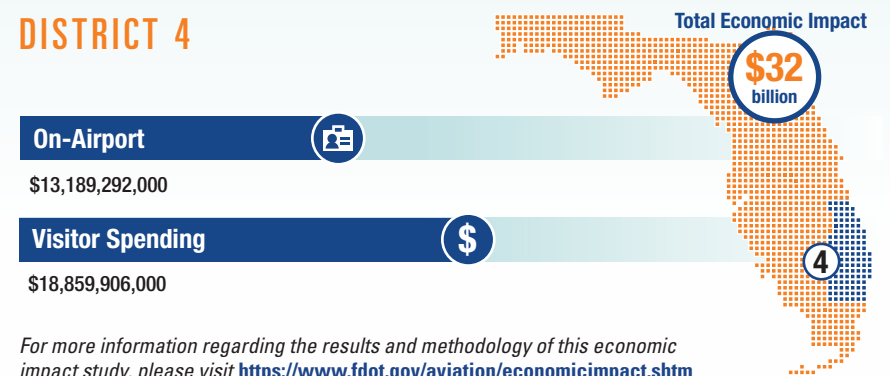
Florida realizes significant economic benefits from aviation. The Florida Department of Transportation completed a comprehensive economic impact analysis to measure these benefits. Benefits measured in the FDOT study considered on-airport impacts, visitor spending impacts, and multiplier impacts.

Florida's 129 public-use airports (including 20 commercial service facilities) are a major economic engine of the State's economy. The aviation system keeps Florida connected to the global marketplace while simultaneously driving local economies. Florida's airports provide space and infrastructure for important activities such as manufacturing, logistics, tourism, and emergency response. Below is a summary of the total statewide economic impact as well as the impact of District 4.

### STATEWIDE



### DISTRICT 4



For more information regarding the results and methodology of this economic impact study, please visit <https://www.fdot.gov/aviation/economicimpact.shtm>