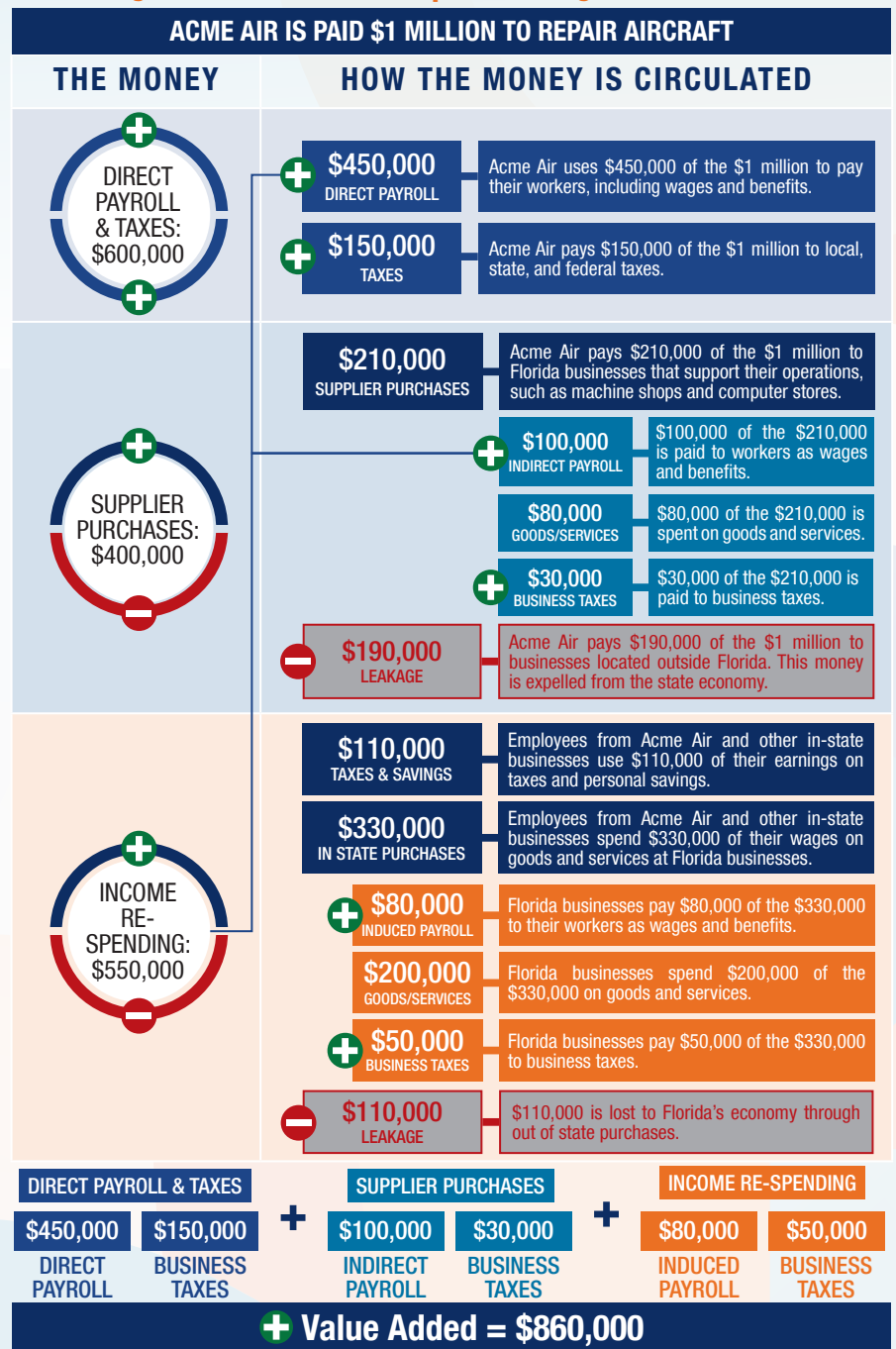


The following graphic is an example of how activity at Florida airports generates economic impacts throughout the state.



## THE ECONOMIC IMPACT OF

# Space Coast Regional Airport (TIX)



TIX

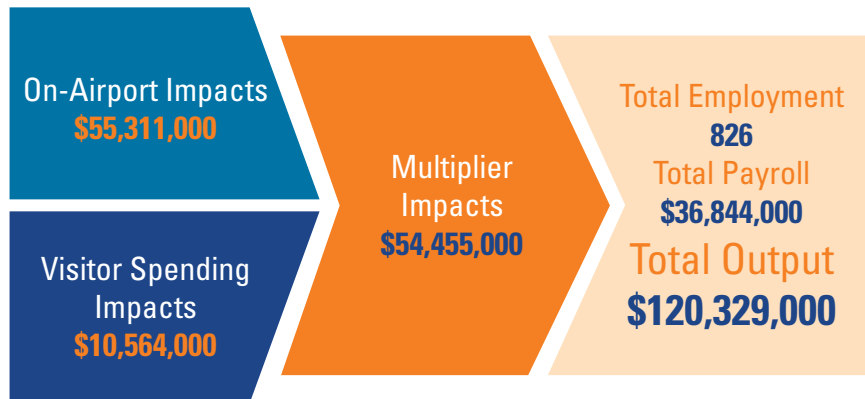


## SPACE COAST REGIONAL AIRPORT

Space Coast Regional Airport is located in Brevard County along Florida's Atlantic Coast, approximately seven miles south of downtown Titusville. The airport has two intersecting runways, with the longest runway measuring 7,319 feet. The airport accommodates most general aviation aircraft and serves a variety of general aviation activities.

The airport primarily supports business activity and flight training. It serves many of the business needs in the region with its proximity to large ports. Space Coast Regional Airport is the closest airport to the Kennedy Space Center. As such, it helps accommodate the travel needs of many of the Space Centers visitors.

The airport provides aircraft maintenance and two full service fixed-based operators (FBOs) to serve local and transient users. The helicopter flight training school is an important tenant at the airport, since the school is responsible for most of the airport's operations. The airport also hosts the annual Warbird Airshow, which features vintage military aircraft and attracts visitors from all over the country.



Previous versions of this Study used different terminology to communicate results. The following terms were updated: Direct Impacts changed to On-Airport Impacts and Indirect Impacts changed to Visitor Spending Impacts.

## Florida's Statewide Benefits From Aviation

**Florida realizes significant economic benefits from aviation.** The Florida Department of Transportation completed a comprehensive economic impact analysis to measure these benefits. Benefits measured in the FDOT study considered on-airport impacts, visitor spending impacts, and multiplier impacts.

Florida's 129 public-use airports (including 20 commercial service facilities) are a major economic engine of the State's economy. The aviation system keeps Florida connected to the global marketplace while simultaneously driving local economies. Florida's airports provide space and infrastructure for important activities such as manufacturing, logistics, tourism, and emergency response. Below is a summary of the total statewide economic impact as well as the impact of District 5.

### STATEWIDE



### DISTRICT 5



For more information regarding the results and methodology of this economic impact study, please visit <https://www.fdot.gov/aviation/economicimpact.shtm>