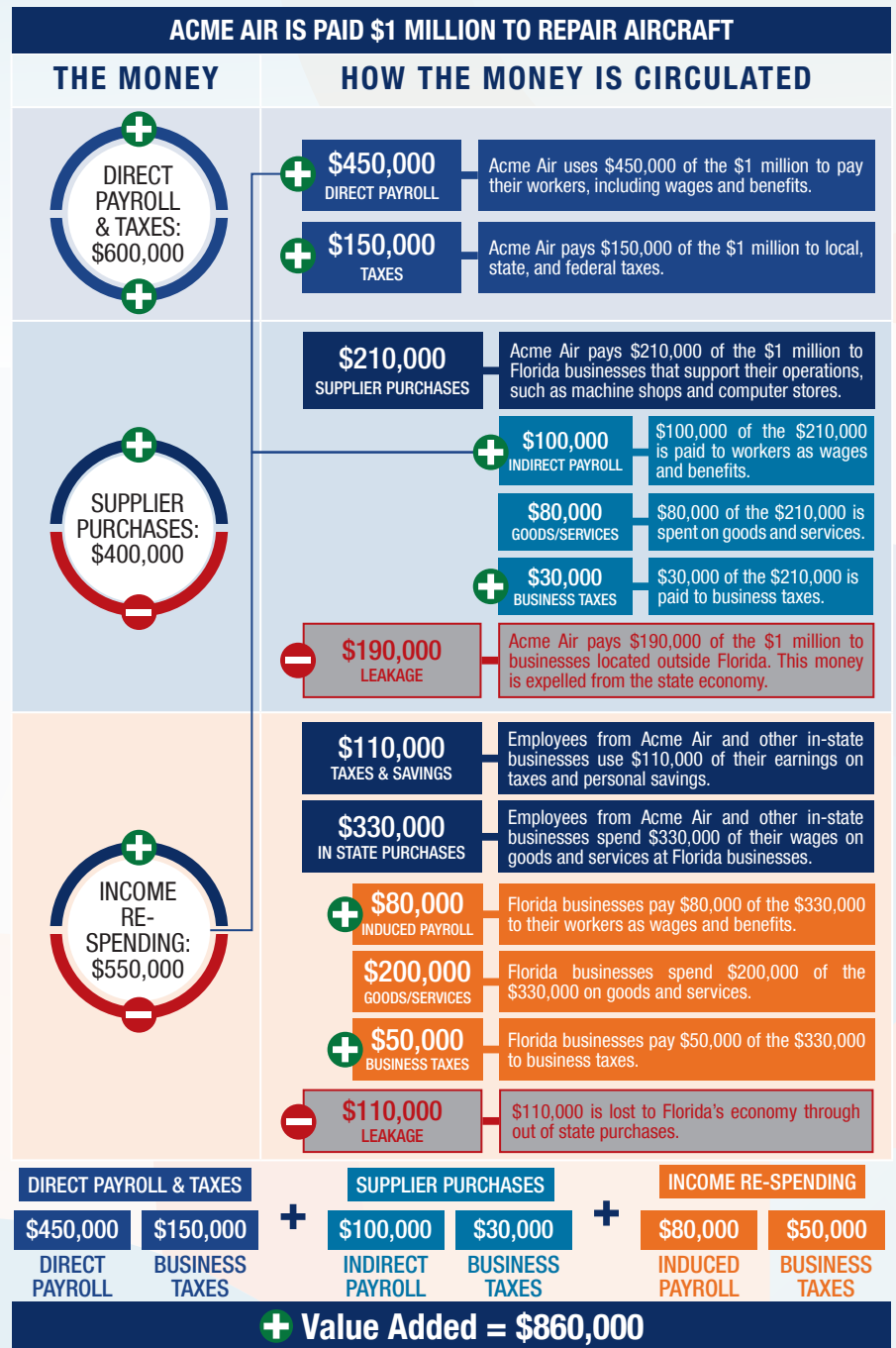


The following graphic is an example of how activity at Florida airports generates economic impacts throughout the state.



THE ECONOMIC IMPACT OF

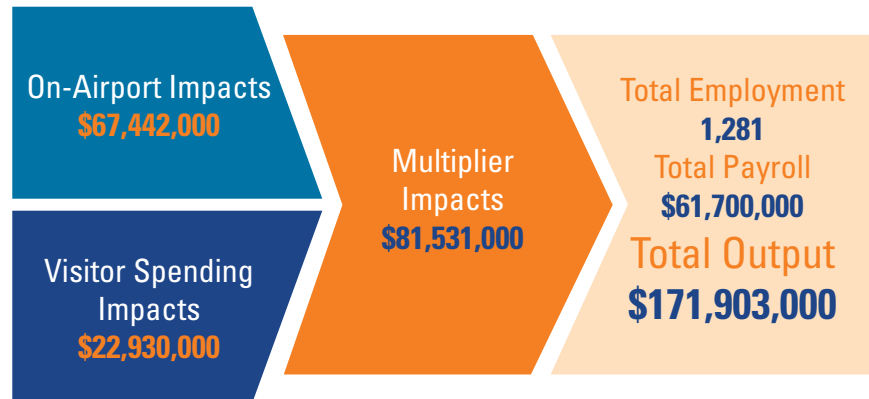
New Smyrna Beach Municipal Airport (EVB)



NEW SMYRNA BEACH MUNICIPAL AIRPORT

New Smyrna Beach Municipal Airport is located in Volusia County along Florida's Atlantic Coast, about two miles north of downtown New Smyrna Beach. The airport has three intersecting runways, with the longest running measuring 5,000 feet, allowing the airport to accommodate mid-size general aviation aircraft.

The airport supports recreational flying, business activity, and flight training. The airport is a great alternative for business and pleasure travelers due to its close proximity to beaches, Kennedy Space Center and Central Florida attractions and events. Aircraft at the airport provide mosquito control for all of Volusia County, as well as firefighting support during wild fires. Important tenants at the airport include a commuter air carrier and fixed base operator, a major flight training academy, and several aircraft restoration companies, all of which contribute to the airport's economic impacts.



Previous versions of this Study used different terminology to communicate results. The following terms were updated: Direct Impacts changed to On-Airport Impacts and Indirect Impacts changed to Visitor Spending Impacts.

Florida's Statewide Benefits From Aviation

Florida realizes significant economic benefits from aviation. The Florida Department of Transportation completed a comprehensive economic impact analysis to measure these benefits. Benefits measured in the FDOT study considered on-airport impacts, visitor spending impacts, and multiplier impacts.

Florida's 129 public-use airports (including 20 commercial service facilities) are a major economic engine of the State's economy. The aviation system keeps Florida connected to the global marketplace while simultaneously driving local economies. Florida's airports provide space and infrastructure for important activities such as manufacturing, logistics, tourism, and emergency response. Below is a summary of the total statewide economic impact as well as the impact of District 5.

STATEWIDE



DISTRICT 5



For more information regarding the results and methodology of this economic impact study, please visit <https://www.fdot.gov/aviation/economicimpact.shtm>