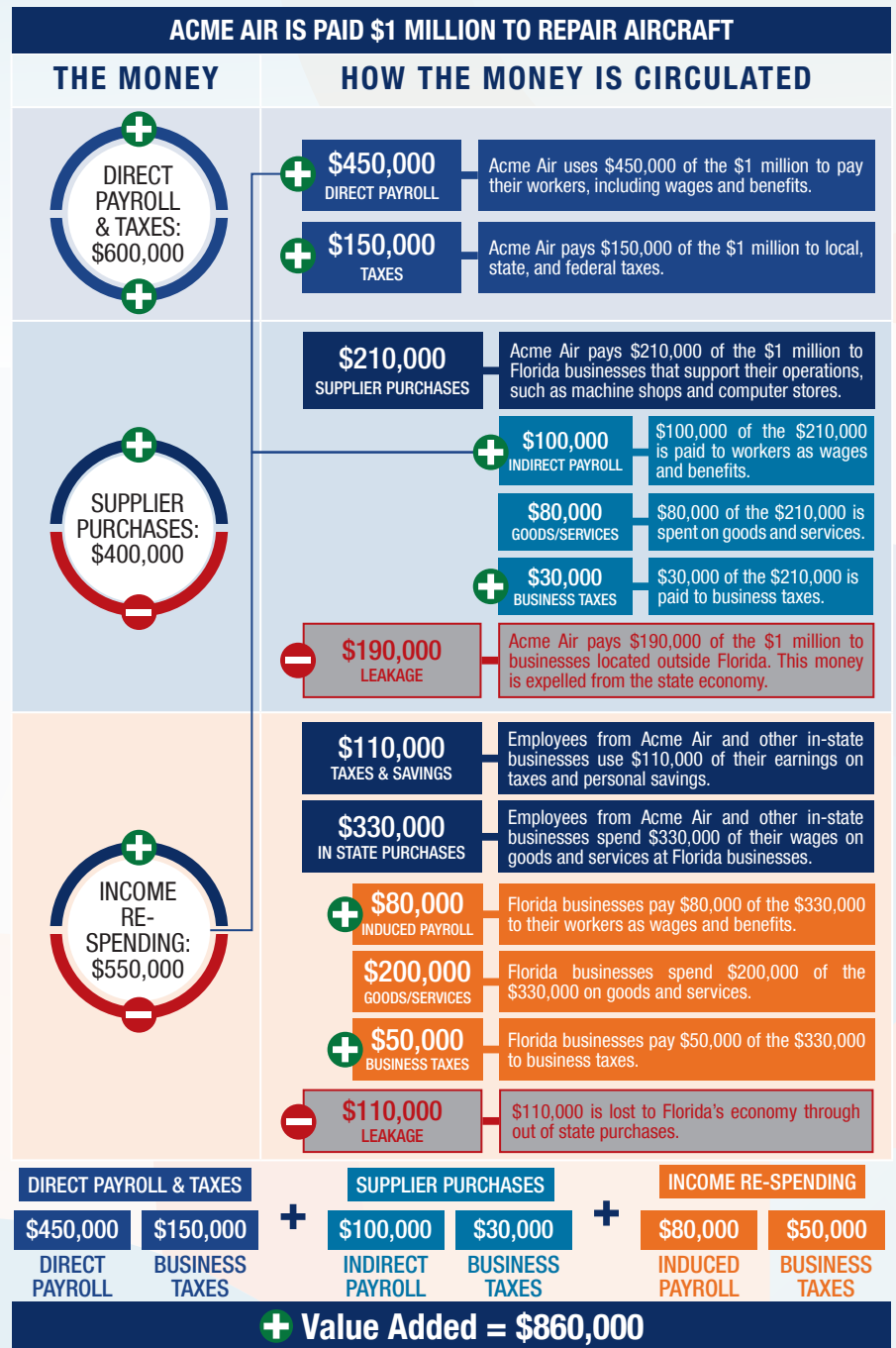


The following graphic is an example of how activity at Florida airports generates economic impacts throughout the state.



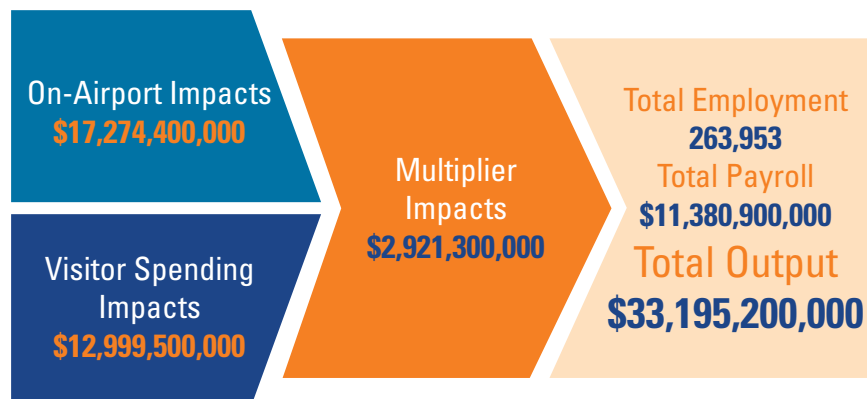
THE ECONOMIC IMPACT OF Miami International Airport (MIA)



MIAMI INTERNATIONAL AIRPORT

Miami International Airport is located in Miami-Dade County, approximately five miles west of downtown Miami. The airport has four runways, with the longest runway measuring 13,016 feet, allowing it to accommodate a full range of commercial and general aviation aircraft. The airport is one of the busiest in the U.S. due to its proximity to tourist attractions and strategic location between North America, Latin America, and Europe. In 2017, over 44 million passengers traveled through the airport, making it the second busiest in Florida. The airport is a major gateway into the United States for international travelers and is responsible for 60 percent of all international visitors to Florida.

The airport is also one of the largest in terms of cargo activity in the country, consistently moving more international freight than any other U.S. airport. The high volume of passengers and cargo activity contributes to the airport's massive economic impacts.



Source: *The Economic Impact of Miami International Airport and the General Aviation Airports within the Miami-Dade Airport System*. Martin and Associates. February 3, 2017.
Previous versions of this Study used different terminology to communicate results. The following terms were updated: Direct Impacts changed to On-Airport Impacts and Indirect Impacts changed to Visitor Spending Impacts.

Florida's Statewide Benefits From Aviation

Florida realizes significant economic benefits from aviation. The Florida Department of Transportation completed a comprehensive economic impact analysis to measure these benefits. Benefits measured in the FDOT study considered on-airport impacts, and visitor spending impacts, and multiplier impacts.

Florida's 129 public-use airports (including 20 commercial service facilities) are a major economic engine of the State's economy. The aviation system keeps Florida connected to the global marketplace while simultaneously driving local economies. Florida's airports provide space and infrastructure for important activities such as manufacturing, logistics, tourism, and emergency response. Below is a summary of the total statewide economic impact as well as the impact of District 6.

STATEWIDE



DISTRICT 6



For more information regarding the results and methodology of this economic impact study, please visit <https://www.fdot.gov/aviation/economicimpact.shtm>