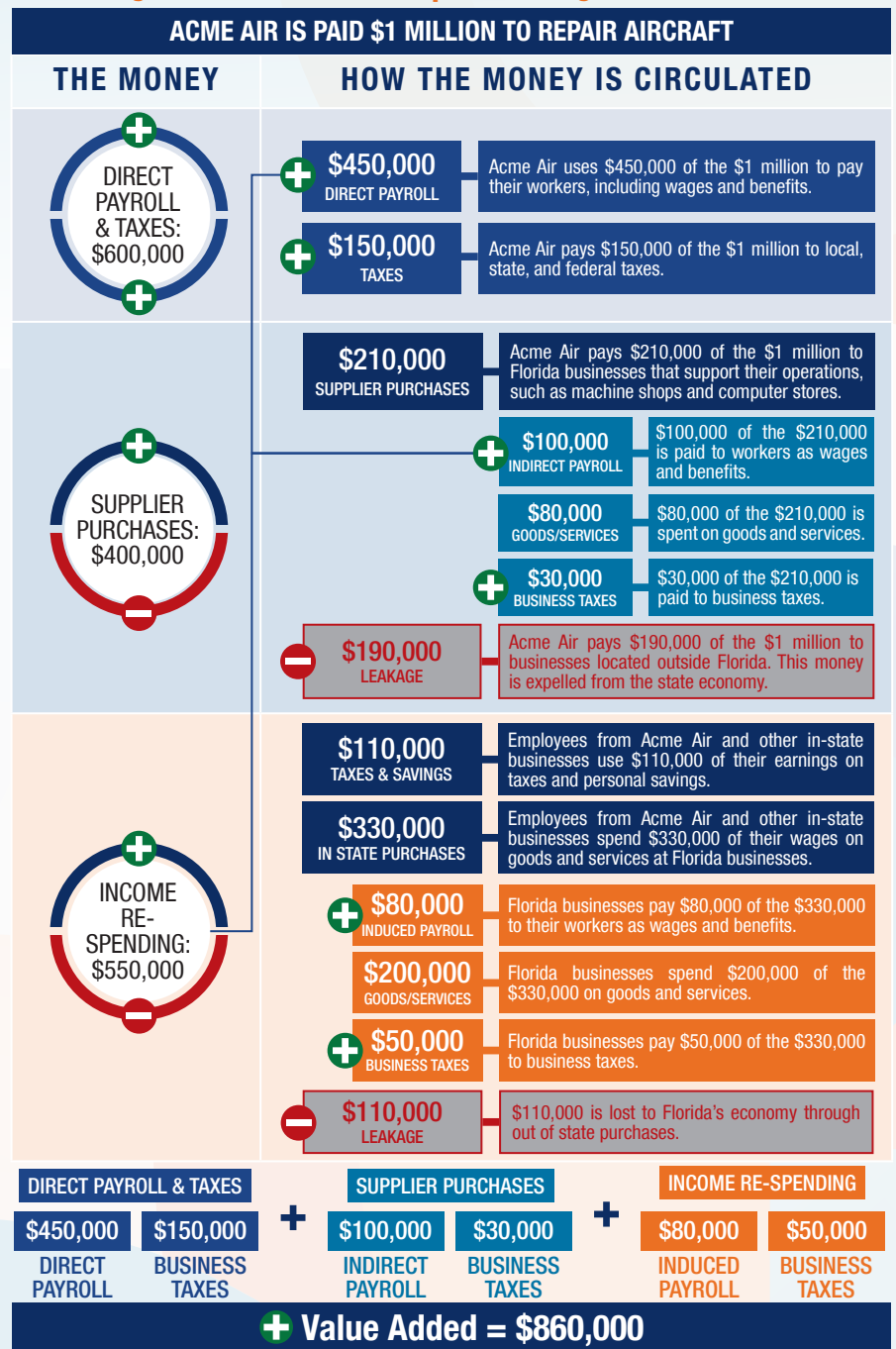


The following graphic is an example of how activity at Florida airports generates economic impacts throughout the state.



## THE ECONOMIC IMPACT OF

# Belle Glade State Municipal Airport (X10)



X10

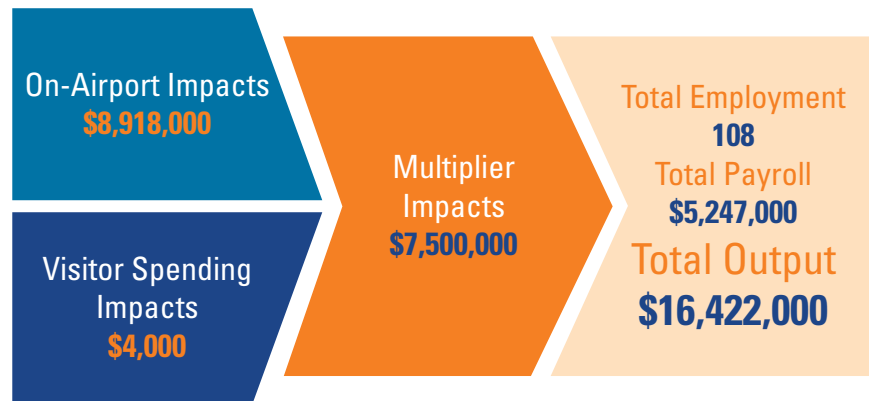
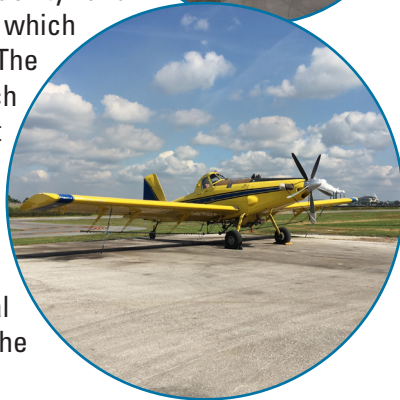


**FDOT**

## BELLE GLADE STATE MUNICIPAL AIRPORT

Belle Glade State Municipal Airport is located in Palm Beach County, approximately 38 miles west of West Palm Beach. The airport has one asphalt runway that measures 3,750 feet. The airport serves the general aviation needs of the local community and primarily accommodates small general aviation aircraft.

The airport is a community driven facility and primarily supports crop spraying, which benefits the local agriculture industry. The airport has five on-site tenants, all of which are aerial application businesses that provide agricultural spraying services. The airport supports recreational flying, including weekend skydiving. The airport provides maintenance and self-service fueling. The airport also hosts an annual open house that helps to advertise the importance of aviation and the airport.



Previous versions of this Study used different terminology to communicate results. The following terms were updated: Direct Impacts changed to On-Airport Impacts and Indirect Impacts changed to Visitor Spending Impacts.

## Florida's Statewide Benefits From Aviation

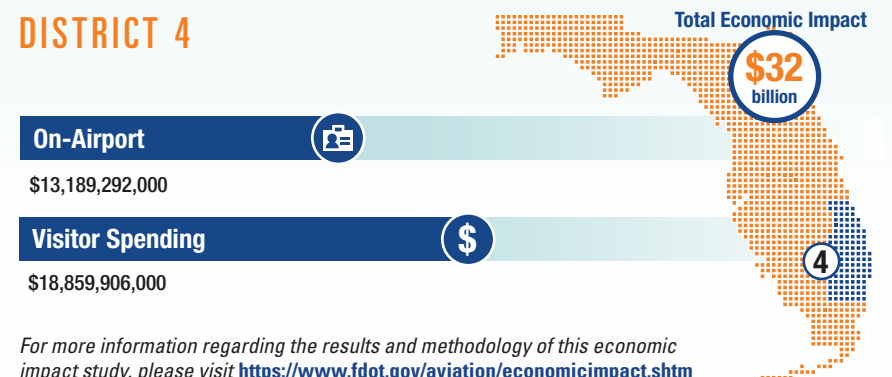
**Florida realizes significant economic benefits from aviation.** The Florida Department of Transportation completed a comprehensive economic impact analysis to measure these benefits. Benefits measured in the FDOT study considered on-airport impacts, visitor spending impacts, and multiplier impacts.

Florida's 129 public-use airports (including 20 commercial service facilities) are a major economic engine of the State's economy. The aviation system keeps Florida connected to the global marketplace while simultaneously driving local economies. Florida's airports provide space and infrastructure for important activities such as manufacturing, logistics, tourism, and emergency response. Below is a summary of the total statewide economic impact as well as the impact of District 4.

### STATEWIDE



### DISTRICT 4



For more information regarding the results and methodology of this economic impact study, please visit <https://www.fdot.gov/aviation/economicimpact.shtm>