

The following graphic is an example of how activity at Florida airports generates economic impacts throughout the state.

ACME AIR IS PAID \$1 MILLION TO REPAIR AIRCRAFT

THE MONEY



HOW THE MONEY IS CIRCULATED

+ \$450,000 DIRECT PAYROLL
Acme Air uses \$450,000 of the \$1 million to pay their workers, including wages and benefits.

+ \$150,000 TAXES
Acme Air pays \$150,000 of the \$1 million to local, state, and federal taxes.

\$210,000 SUPPLIER PURCHASES
Acme Air pays \$210,000 of the \$1 million to Florida businesses that support their operations, such as machine shops and computer stores.

+ \$100,000 INDIRECT PAYROLL
\$100,000 of the \$210,000 is paid to workers as wages and benefits.

\$80,000 GOODS/SERVICES
\$80,000 of the \$210,000 is spent on goods and services.

+ \$30,000 BUSINESS TAXES
\$30,000 of the \$210,000 is paid to business taxes.

- \$190,000 LEAKAGE
Acme Air pays \$190,000 of the \$1 million to businesses located outside Florida. This money is expelled from the state economy.

\$110,000 TAXES & SAVINGS
Employees from Acme Air and other in-state businesses use \$110,000 of their earnings on taxes and personal savings.

\$330,000 IN STATE PURCHASES
Employees from Acme Air and other in-state businesses spend \$330,000 of their wages on goods and services at Florida businesses.

+ \$80,000 INDUCED PAYROLL
Florida businesses pay \$80,000 of the \$330,000 to their workers as wages and benefits.

\$200,000 GOODS/SERVICES
Florida businesses spend \$200,000 of the \$330,000 on goods and services.

+ \$50,000 BUSINESS TAXES
Florida businesses pay \$50,000 of the \$330,000 to business taxes.

- \$110,000 LEAKAGE
\$110,000 is lost to Florida's economy through out of state purchases.

DIRECT PAYROLL & TAXES

\$450,000 DIRECT PAYROLL
\$150,000 BUSINESS TAXES

SUPPLIER PURCHASES

\$100,000 INDIRECT PAYROLL
\$30,000 BUSINESS TAXES

INCOME RE-SPENDING

\$80,000 INDUCED PAYROLL
\$50,000 BUSINESS TAXES

+ Value Added = \$860,000

THE ECONOMIC IMPACT OF Miami Executive Airport (TMB)

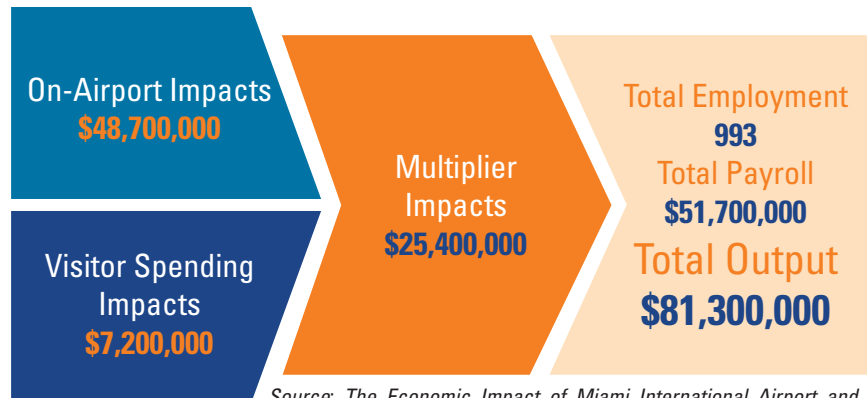


TMB

MIAMI EXECUTIVE AIRPORT

Miami Executive Airport is located in Miami-Dade County, about 17 miles southwest of downtown Miami. The airport has three runways, with the longest measuring 6,000 feet. The airport's location makes it one of the busiest general aviation airports in Florida.

Miami Executive Airport primarily supports recreational flying, business activity, and flight training. Additionally, the airport plays an important role as a reliever for Miami International Airport. Due to its proximity to the Florida Turnpike and Miami metro area, the airport provides fast and easy access to recreational and business activities in the region. Multiple flight training schools are located on-site, and the airport also accommodates flight training operations from other airports. The airport also stages relief efforts during natural disasters, supports mosquito spraying, and hosts large community events. Government operations, such as the Miami-Dade Police and Fire Rescue are based at the airport. Other tenants include several aircraft maintenance businesses, air charter operators, and fixed-base operators.



Source: The Economic Impact of Miami International Airport and the General Aviation Airports within the Miami-Dade Airport System. Martin and Associates. February 3, 2017.

Previous versions of this Study used different terminology to communicate results. The following terms were updated: Direct Impacts changed to On-Airport Impacts and Indirect Impacts changed to Visitor Spending Impacts.

Florida's Statewide Benefits From Aviation

Florida realizes significant economic benefits from aviation. The Florida Department of Transportation completed a comprehensive economic impact analysis to measure these benefits. Benefits measured in the FDOT study considered on-airport impacts, visitor spending impacts, and multiplier impacts.

Florida's 129 public-use airports (including 20 commercial service facilities) are a major economic engine of the State's economy. The aviation system keeps Florida connected to the global marketplace while simultaneously driving local economies. Florida's airports provide space and infrastructure for important activities such as manufacturing, logistics, tourism, and emergency response. Below is a summary of the total statewide economic impact as well as the impact of District 6.

STATEWIDE



DISTRICT 6



For more information regarding the results and methodology of this economic impact study, please visit <https://www.fdot.gov/aviation/economicimpact.shtm>