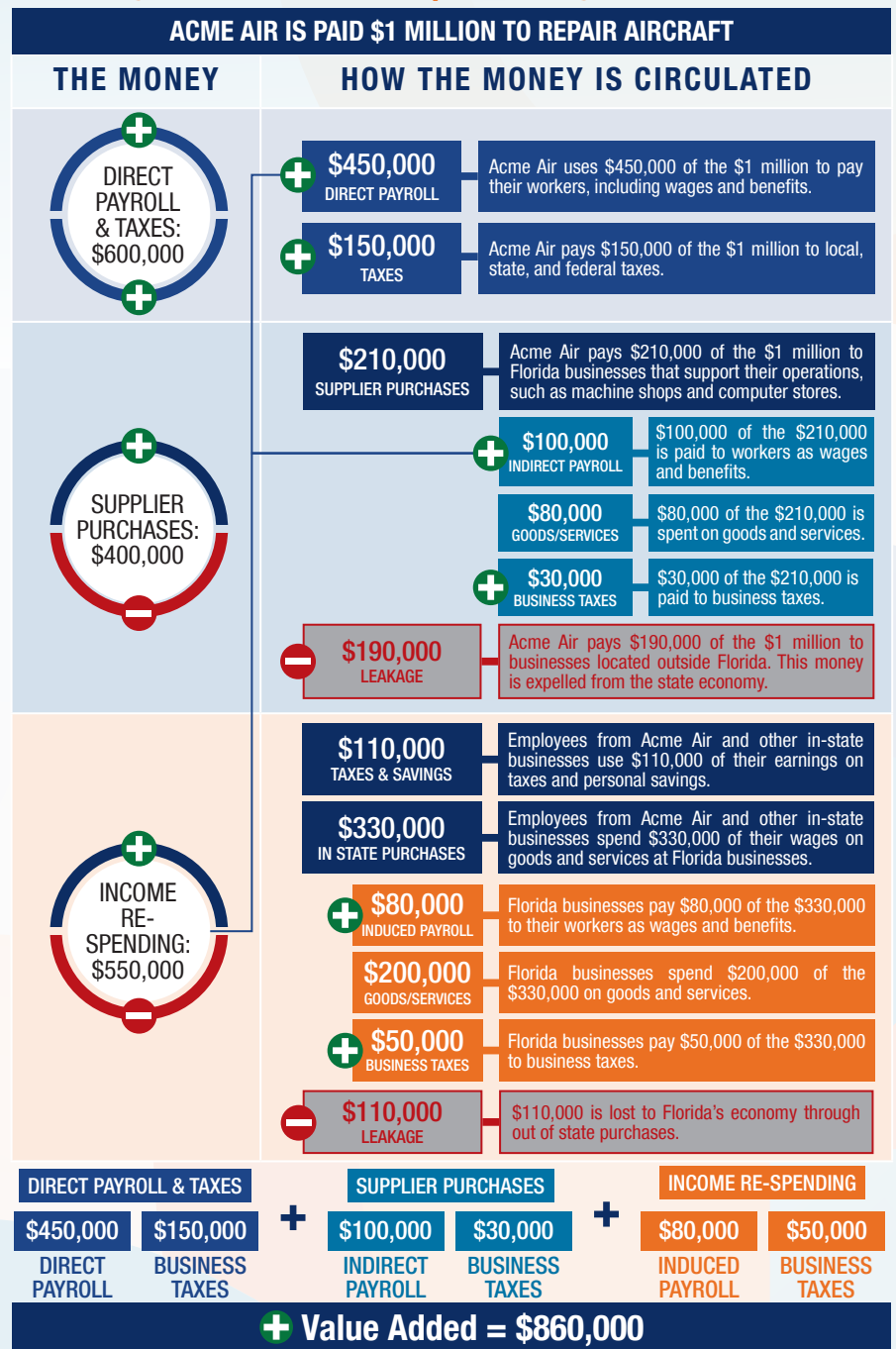


The following graphic is an example of how activity at Florida airports generates economic impacts throughout the state.



## THE ECONOMIC IMPACT OF Pierson Municipal Airport (2J8)



## PIERSON MUNICIPAL AIRPORT

Pierson Municipal Airport is located in Volusia County, approximately 26 miles west of Daytona Beach. The airport has one runway, which measures 2,600 feet. The airport serves the general aviation needs of the local region.

The airport primarily supports recreational flying, agricultural spraying, and business activity. The airport has one of the few remaining turf runways that accommodates soft field landing and take-off, making flight training important business at the airport. Also for this reason, instructors at the airport provide flight training to neighboring airports and to law enforcement. The airport is mainly used for recreational flying, but also accommodates visitors to Lake George. The airport also supports emergency activities, such as police, firefighters, and medical helicopters.



Previous versions of this Study used different terminology to communicate results. The following terms were updated: Direct Impacts changed to On-Airport Impacts and Indirect Impacts changed to Visitor Spending Impacts.

## Florida's Statewide Benefits From Aviation

**Florida realizes significant economic benefits from aviation.** The Florida Department of Transportation completed a comprehensive economic impact analysis to measure these benefits. Benefits measured in the FDOT study considered on-airport impacts, visitor spending impacts, and multiplier impacts.

Florida's 129 public-use airports (including 20 commercial service facilities) are a major economic engine of the State's economy. The aviation system keeps Florida connected to the global marketplace while simultaneously driving local economies. Florida's airports provide space and infrastructure for important activities such as manufacturing, logistics, tourism, and emergency response. Below is a summary of the total statewide economic impact as well as the impact of District 5.

### STATEWIDE



### DISTRICT 5



For more information regarding the results and methodology of this economic impact study, please visit <https://www.fdot.gov/aviation/economicimpact.shtm>