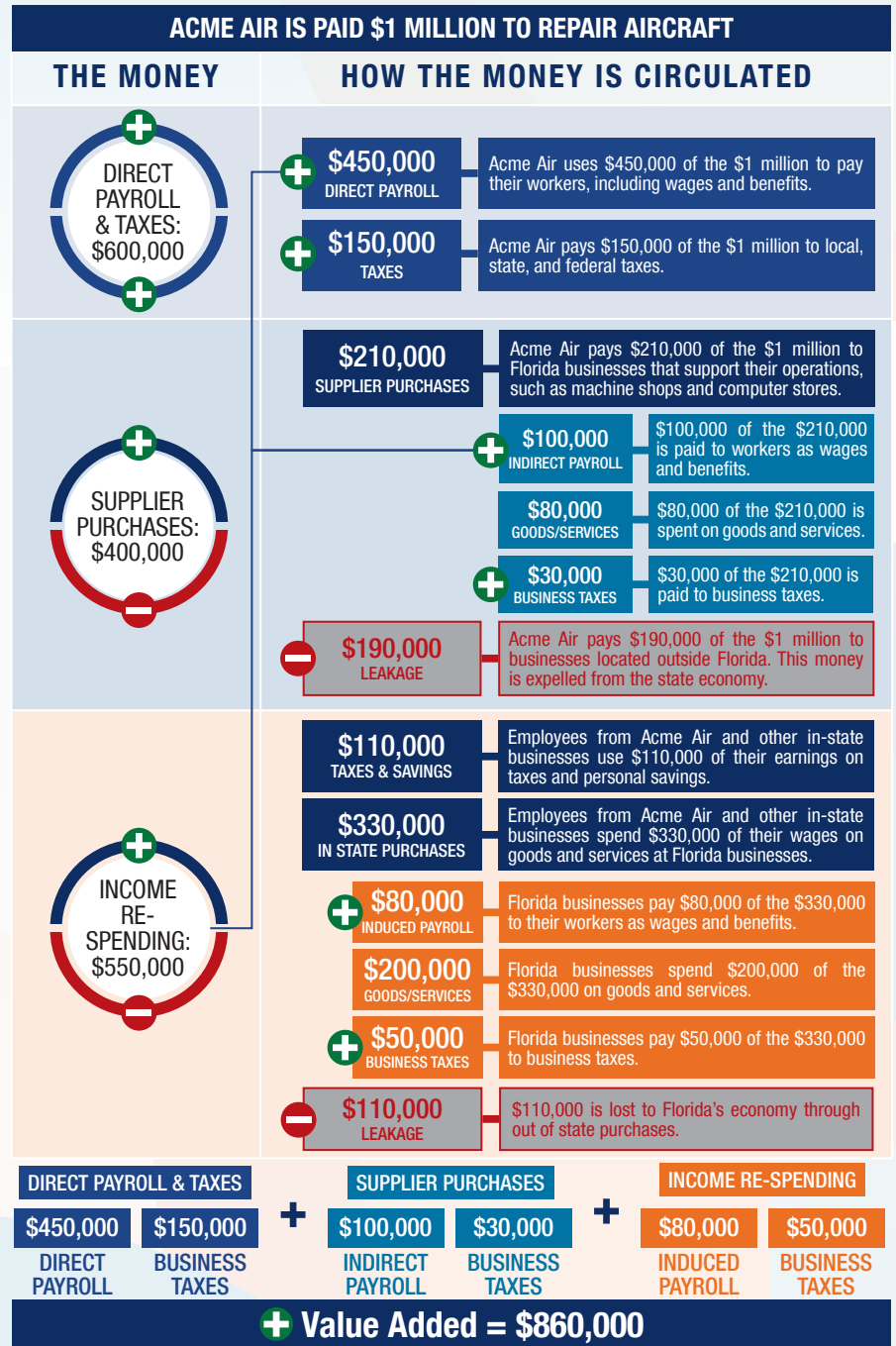


The following graphic is an example of how activity at Florida airports generates economic impacts throughout the state.



## THE ECONOMIC IMPACT OF Leesburg International Airport (LEE)



## LEESBURG INTERNATIONAL AIRPORT

Leesburg International Airport is located in Lake County, approximately 32 miles northwest of downtown Orlando. The airport has two intersecting runways, with the longest runway measuring 6,300 feet. The airport is a Port of Entry into the U.S. and accommodates general aviation aircraft, including business jet aircraft.

The airport primarily supports recreational flying, business activity, and flight training. The airport's tenants, such as a helicopter charter company, contribute to its economic impact. An on-site aircraft maintenance business serves local and transient users. The airport supports local law enforcement, relief efforts during hurricanes, and community events such as fly-ins. Instructors at the airport provide Navy helicopter training, among other types of military training.



On-Airport Impacts  
**\$59,112,000**

Visitor Spending  
Impacts  
**\$2,593,000**

Multiplier  
Impacts  
**\$47,816,000**

Total Employment  
**556**  
Total Payroll  
**\$31,190,000**  
Total Output  
**\$109,522,000**

*Previous versions of this Study used different terminology to communicate results. The following terms were updated: Direct Impacts changed to On-Airport Impacts and Indirect Impacts changed to Visitor Spending Impacts.*

## Florida's Statewide Benefits From Aviation

**Florida realizes significant economic benefits from aviation.** The Florida Department of Transportation completed a comprehensive economic impact analysis to measure these benefits. Benefits measured in the FDOT study considered on-airport impacts, visitor spending impacts, and multiplier impacts.

Florida's 129 public-use airports (including 20 commercial service facilities) are a major economic engine of the State's economy. The aviation system keeps Florida connected to the global marketplace while simultaneously driving local economies. Florida's airports provide space and infrastructure for important activities such as manufacturing, logistics, tourism, and emergency response. Below is a summary of the total statewide economic impact as well as the impact of District 5.

### STATEWIDE

#### On-Airport

\$72,014,206,000

#### Visitor Spending

\$90,732,534,000

#### Industry Reliance

\$2,281,049,000

#### Military

\$9,815,780,000

Total Economic Impact

**\$175**  
billion

### DISTRICT 5

#### On-Airport

\$20,528,246,000

#### Visitor Spending

\$29,224,709,000

#### Military

\$850,499,000

Total Economic Impact

**\$51**  
billion

For more information regarding the results and methodology of this economic impact study, please visit <https://www.fdot.gov/aviation/economicimpact.shtm>