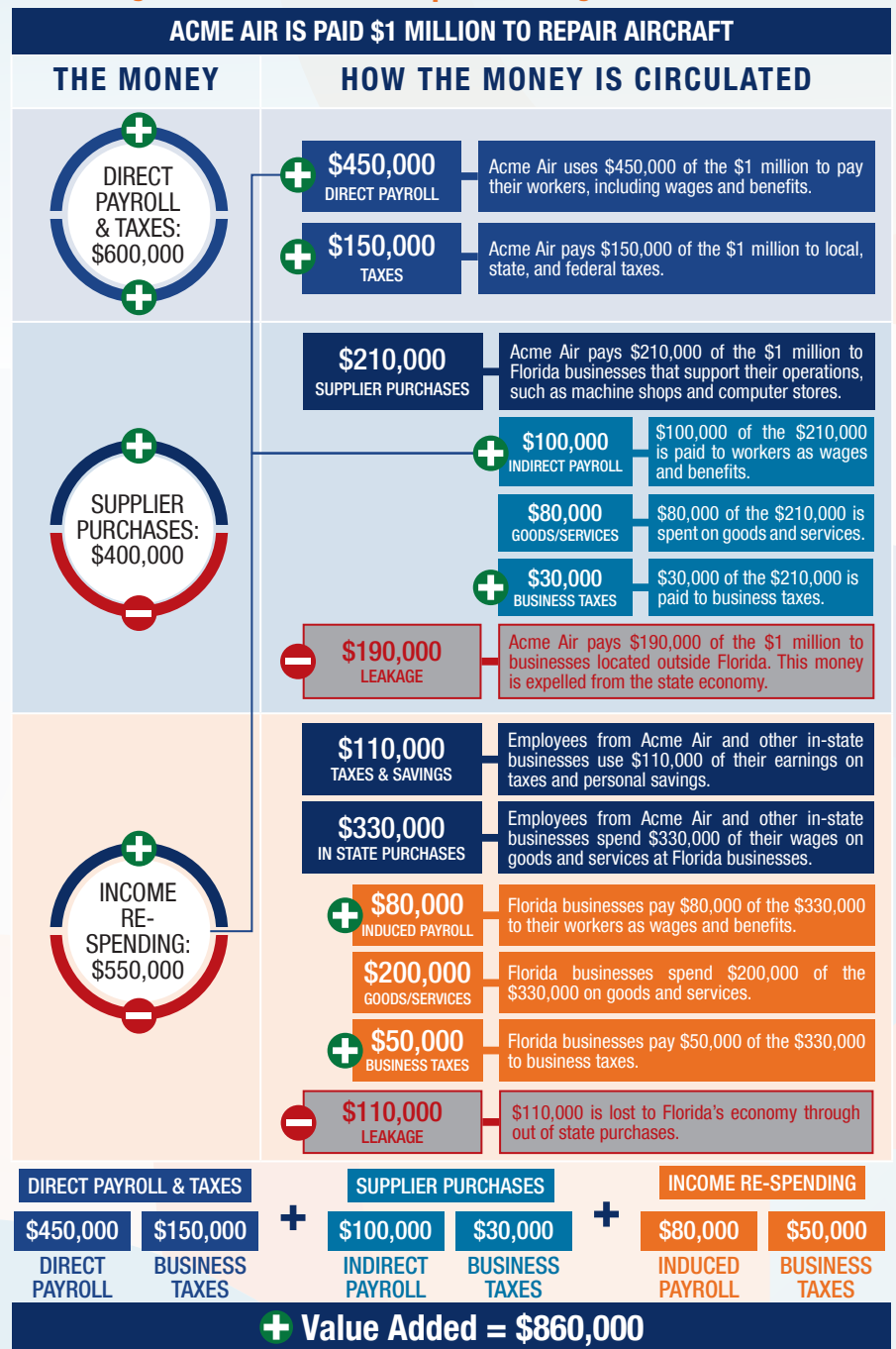


The following graphic is an example of how activity at Florida airports generates economic impacts throughout the state.



THE ECONOMIC IMPACT OF

Zephyrhills Municipal Airport (ZPH)



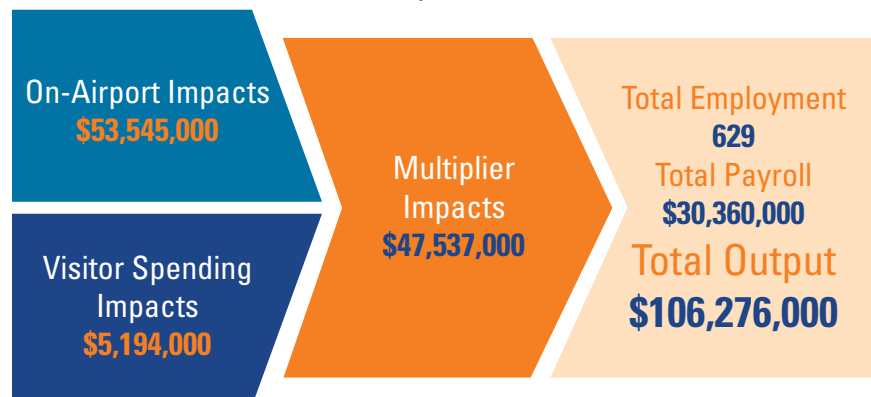
ZPH



ZEPHYRHILLS MUNICIPAL AIRPORT

Zephyrhills Municipal Airport is located in Pasco County, about 26 miles northeast of Tampa. The airport has two runways, with the longest runway measuring 5,000 feet. The airport serves all types of general aviation aircraft, including business jets.

The airport primarily supports recreational flying. Transient general aviation traffic at the airport is primarily due to fuel stops and weekend visitors. Skydiving is the airport's biggest economic driver, with visitors from all over the world coming to practice. Tenant businesses at the airport include two skydiving equipment manufacturers, a skydiving equipment retailer, and Skydive City Z-Hills, the airport's skydiving center. Military jumpers practice parachuting and skydiving at the airport as well. The airport offers very competitive fuel and hangars for rent, while other airport tenants, such as an aircraft maintenance and detail shop, contribute to its economic impact. Additionally, Zephyrhills Municipal Airport hosts an annual BBQ and Blues Festival Fly-In, which attracts thousands of visitors, many of which come from out of state.



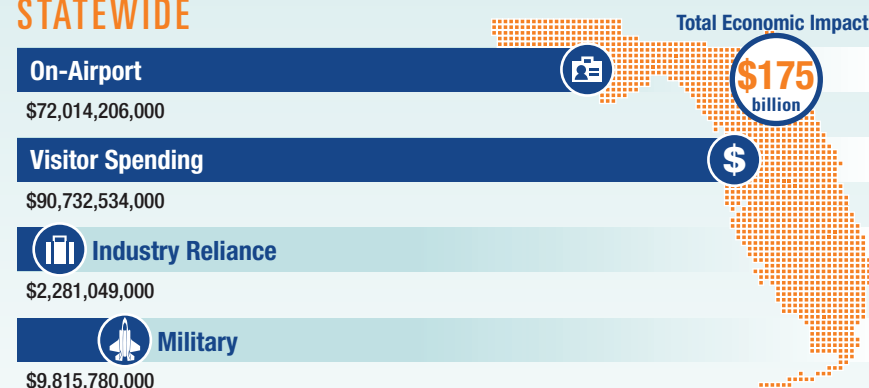
Previous versions of this Study used different terminology to communicate results. The following terms were updated: Direct Impacts changed to On-Airport Impacts and Indirect Impacts changed to Visitor Spending Impacts.

Florida's Statewide Benefits From Aviation

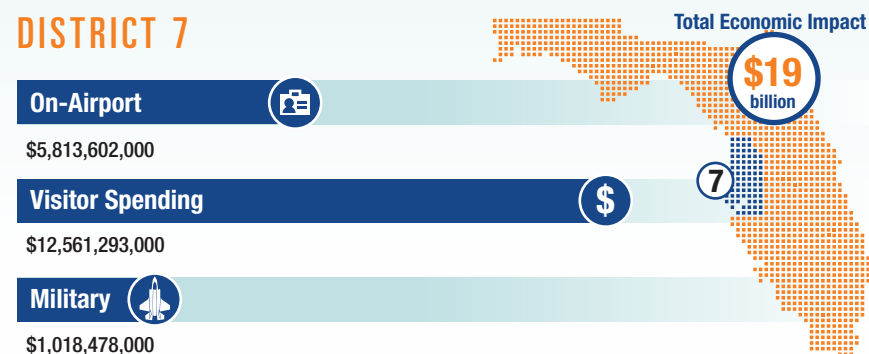
Florida realizes significant economic benefits from aviation. The Florida Department of Transportation completed a comprehensive economic impact analysis to measure these benefits. Benefits measured in the FDOT study considered on-airport impacts, visitor spending impacts, and multiplier impacts.

Florida's 129 public-use airports (including 20 commercial service facilities) are a major economic engine of the State's economy. The aviation system keeps Florida connected to the global marketplace while simultaneously driving local economies. Florida's airports provide space and infrastructure for important activities such as manufacturing, logistics, tourism, and emergency response. Below is a summary of the total statewide economic impact as well as the impact of District 7.

STATEWIDE



DISTRICT 7



For more information regarding the results and methodology of this economic impact study, please visit <https://www.fdot.gov/aviation/economicimpact.shtm>