

The following graphic is an example of how activity at Florida airports generates economic impacts throughout the state.

### ACME AIR IS PAID \$1 MILLION TO REPAIR AIRCRAFT

#### THE MONEY



#### HOW THE MONEY IS CIRCULATED

**\$450,000**  
DIRECT PAYROLL

Acme Air uses \$450,000 of the \$1 million to pay their workers, including wages and benefits.

**\$150,000**  
TAXES

Acme Air pays \$150,000 of the \$1 million to local, state, and federal taxes.

**\$210,000**  
SUPPLIER PURCHASES

Acme Air pays \$210,000 of the \$1 million to Florida businesses that support their operations, such as machine shops and computer stores.

**\$100,000**  
INDIRECT PAYROLL

\$100,000 of the \$210,000 is paid to workers as wages and benefits.

**\$80,000**  
GOODS/SERVICES

\$80,000 of the \$210,000 is spent on goods and services.

**\$30,000**  
BUSINESS TAXES

\$30,000 of the \$210,000 is paid to business taxes.

**\$190,000**  
LEAKAGE

Acme Air pays \$190,000 of the \$1 million to businesses located outside Florida. This money is expelled from the state economy.

**\$110,000**  
TAXES & SAVINGS

Employees from Acme Air and other in-state businesses use \$110,000 of their earnings on taxes and personal savings.

**\$330,000**  
IN STATE PURCHASES

Employees from Acme Air and other in-state businesses spend \$330,000 of their wages on goods and services at Florida businesses.

**\$80,000**  
INDUCED PAYROLL

Florida businesses pay \$80,000 of the \$330,000 to their workers as wages and benefits.

**\$200,000**  
GOODS/SERVICES

Florida businesses spend \$200,000 of the \$330,000 on goods and services.

**\$50,000**  
BUSINESS TAXES

Florida businesses pay \$50,000 of the \$330,000 to business taxes.

**\$110,000**  
LEAKAGE

\$110,000 is lost to Florida's economy through out of state purchases.

#### DIRECT PAYROLL & TAXES

**\$450,000** **\$150,000**  
DIRECT PAYROLL BUSINESS TAXES

#### SUPPLIER PURCHASES

**\$100,000** **\$30,000**  
INDIRECT PAYROLL BUSINESS TAXES

#### INCOME RE-SPENDING

**\$80,000** **\$50,000**  
INDUCED PAYROLL BUSINESS TAXES

**+ Value Added = \$860,000**

## THE ECONOMIC IMPACT OF

# Ocala International- Jim Taylor Field (OCF)



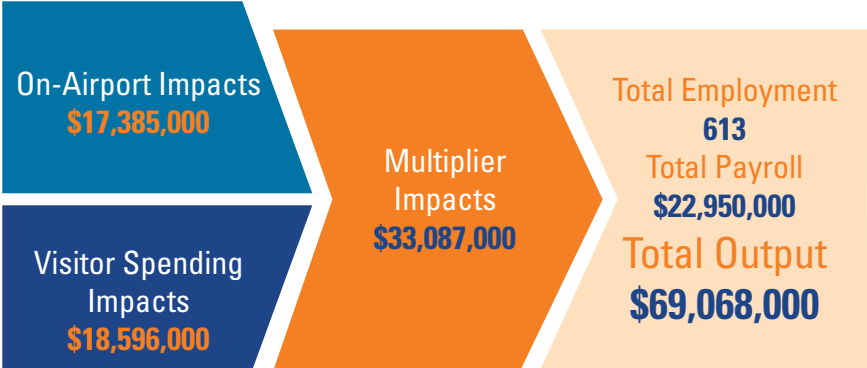
OCF



# OCAALA INTERNATIONAL-JIM TAYLOR FIELD

Ocala International Airport-Jim Taylor Field is located in Marion County, about five miles west of downtown Ocala. The airport has two runways, with the longest runway measuring 7,467 feet. The airport serves the commercial, industrial, and corporate aviation needs of Ocala and Marion County.

The airport primarily supports recreational flying and business activity. The airport also helps support the area’s renowned equine industry by facilitating the transportation of horses using specially equipped airplanes. Other business activity at the airport includes freight and cargo, aerial photography, and flight training. Emergency medical aviation, aerial and wildland firefighting, and law enforcement activities are also supported by the airport. Additionally, the airport provides career training and education. The airport often hosts community events, such as the Experimental Aviation Association’s (EAA) Wings Over Ocala Car and Plane Show, which attracts many visitors to the area.

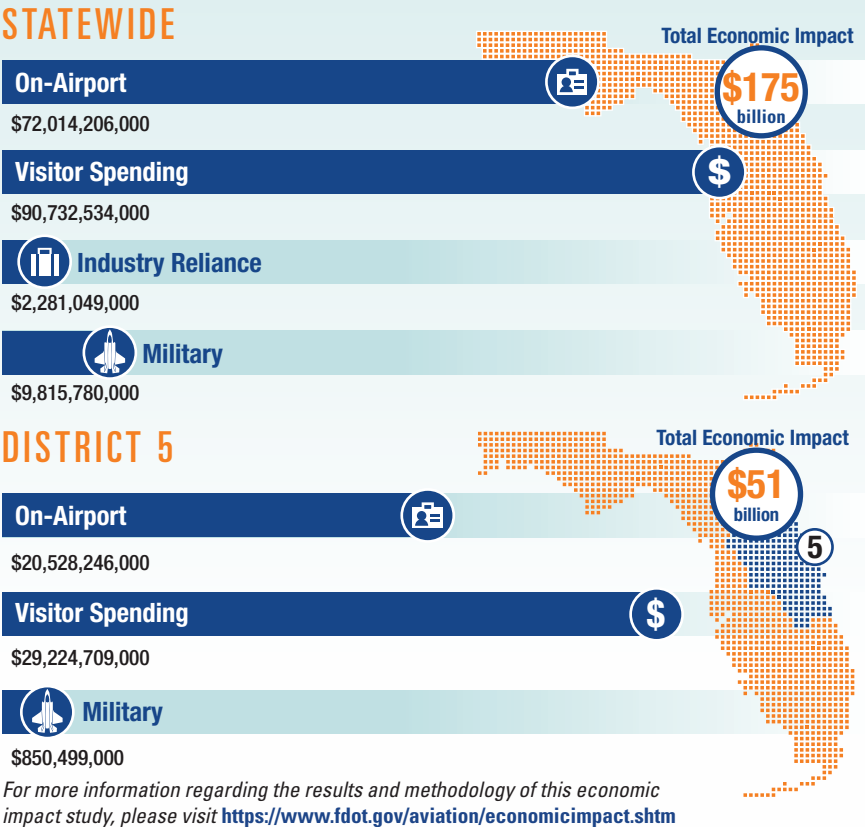


Previous versions of this Study used different terminology to communicate results. The following terms were updated: Direct Impacts changed to On-Airport Impacts and Indirect Impacts changed to Visitor Spending Impacts.

# Florida’s Statewide Benefits From Aviation

**Florida realizes significant economic benefits from aviation.** The Florida Department of Transportation completed a comprehensive economic impact analysis to measure these benefits. Benefits measured in the FDOT study considered on-airport impacts, visitor spending impacts, and multiplier impacts.

Florida’s 129 public-use airports (including 20 commercial service facilities) are a major economic engine of the State’s economy. The aviation system keeps Florida connected to the global marketplace while simultaneously driving local economies. Florida’s airports provide space and infrastructure for important activities such as manufacturing, logistics, tourism, and emergency response. Below is a summary of the total statewide economic impact as well as the impact of District 5.



For more information regarding the results and methodology of this economic impact study, please visit <https://www.fdot.gov/aviation/economicimpact.shtm>