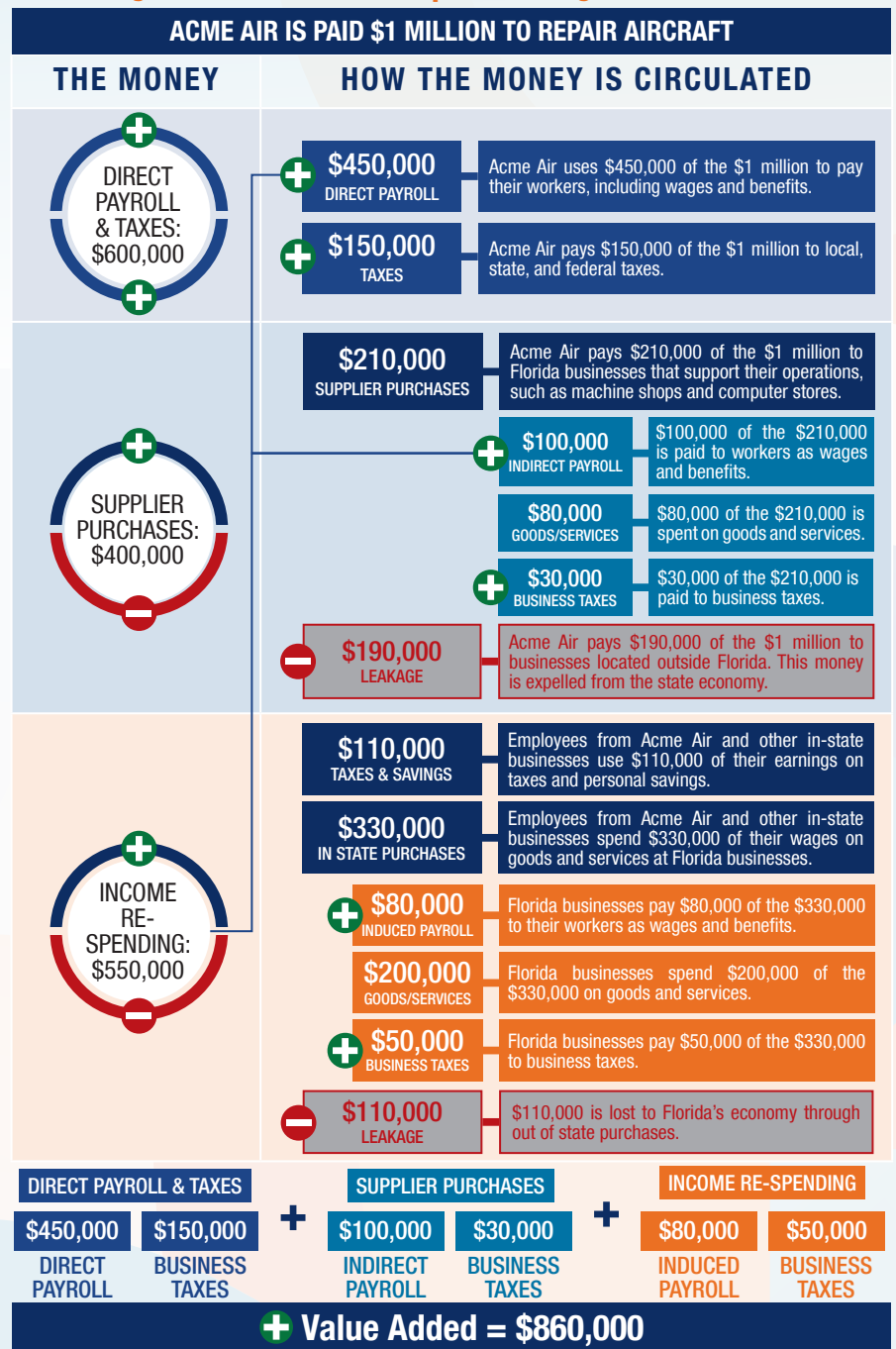


The following graphic is an example of how activity at Florida airports generates economic impacts throughout the state.



THE ECONOMIC IMPACT OF

Suwannee County Airport (24J)

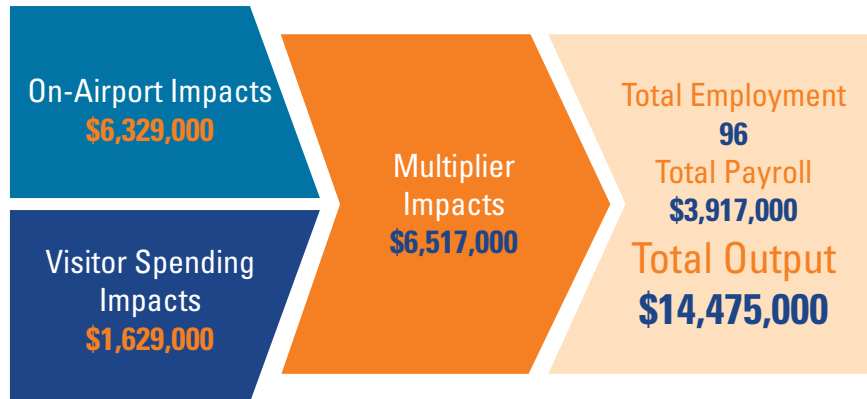


24J

SUWANNEE COUNTY AIRPORT

Suwannee County Airport is located approximately 75 miles east of Tallahassee and 80 miles west of Jacksonville. The airport has one runway, measuring 4,005 feet. The airport accommodates mid-sized general aviation aircraft and serves the general aviation needs of local and visiting users.

The airport primarily supports recreational flying, including power parachuting, and business activity. The airport also supports agricultural spraying, which assists the growth of organic vegetables in the local area. Flight instructors often conduct flight training operations at the airport, and the airport also supports emergency medical aviation, aerial firefighting, search and rescue, and police law enforcement. The airport is engaged in the local community, hosting an Annual Fly-In that offers flights for over 200 children and engages the community in aviation. The airport also offers taxi cabs and a staff car to support user needs.



Previous versions of this Study used different terminology to communicate results. The following terms were updated: Direct Impacts changed to On-Airport Impacts and Indirect Impacts changed to Visitor Spending Impacts.

Florida's Statewide Benefits From Aviation

Florida realizes significant economic benefits from aviation. The Florida Department of Transportation completed a comprehensive economic impact analysis to measure these benefits. Benefits measured in the FDOT study considered on-airport impacts, visitor spending impacts, and multiplier impacts.

Florida's 129 public-use airports (including 20 commercial service facilities) are a major economic engine of the State's economy. The aviation system keeps Florida connected to the global marketplace while simultaneously driving local economies. Florida's airports provide space and infrastructure for important activities such as manufacturing, logistics, tourism, and emergency response. Below is a summary of the total statewide economic impact as well as the impact of District 2.

STATEWIDE



DISTRICT 2



For more information regarding the results and methodology of this economic impact study, please visit <https://www.fdot.gov/aviation/economicimpact.shtm>